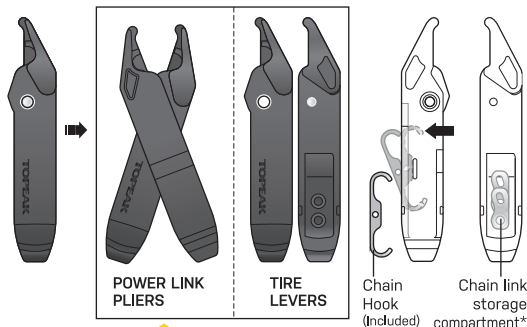




POWER LEVER

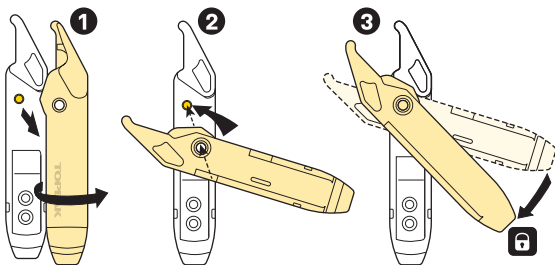
PREPARE TO RIDE

EN



NOTE: Power Lever is not compatible with Shimano® 11 / 12 speed Quick-Links (SM-CN900-11 / SM-CN910-12) when used as power link pliers.

ASSEMBLY



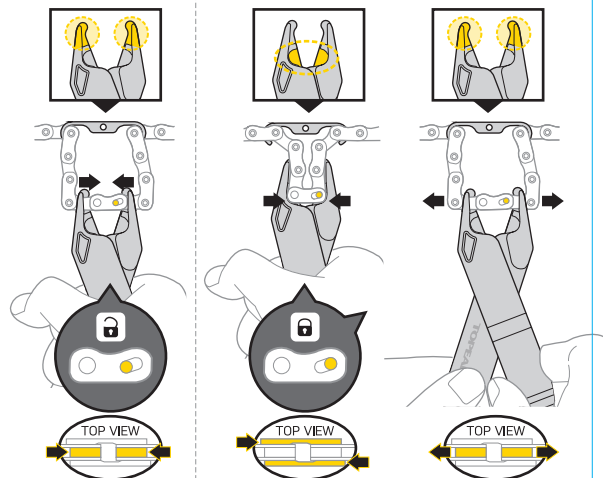
WORKS AS POWER LINK PLIERS

Removes master links

Installs master links

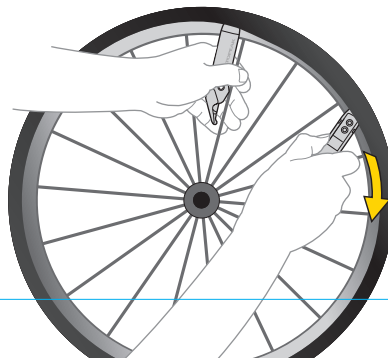
Option 1 (Recommended)

Option 2



WORKS AS TIRE LEVERS

Removes tires



* Shimano® is a registered of Shimano Inc.
Copyright © Toppeak, Inc.
TTL005-MEN / 2020-01