



## **POLARIS RZR 800 STAGE 5 COMPLETE EXHAUST SYSTEM**

### **INSTALLATION INSTRUCTIONS**

Beginning with the muffler, completely remove the OEM exhaust system from the vehicle. Place all OEM mounting hardware aside, as a few components will be used during the installation of the Trinity Racing exhaust system. A small amount of spray lubricant such as WD40 may be applied to the mating surfaces to aid the removal of the OEM exhaust system as well as installation of the Trinity Racing exhaust system.

An additional heat shield has been included with the trinity racing exhaust system. Please follow the heat shield installation instructions below in order to prevent damage to your vehicle.

Install the completed head pipes & mid collector to the cylinder head using the OEM hardware and supplied springs. The head pipes and mid collector section come pre-assembled in the box and may be easier to install as 1 complete pc. Do not tighten the head pipes at this time. New OEM exhaust gaskets are recommended though not required if your original gaskets are in great condition. ( Fig 1)

Now Install the tail section onto the mid collector section. ( FIG 2) Using the OEM rubber stop and trinity supplied Nut and Spring Do not tighten at this time (Fig 3).

Using supplied Nut, Bolt, Washer, attached the tail section button mounting tab to the OEM rubber grommet. Do not tighten at this time. (Fig 4)

Align the muffler mounting tab with the OEM muffler mounting location on the frame and install the muffler to the frame using the supplied mounting hardware. (Fig 5)

All pipes and muffler should now be installed at this time. (Fig 6)

Beginning with the head pipe, torque all mounting hardware to OEM specifications. All mounting hardware should be re-torqued following the first couple hours of riding.

Before starting the vehicle, clean all stainless steel sections of the exhaust system with carb cleaner, brake cleaner, or stainless steel cleaner to remove all oil and finger prints from installation.

Lastly, secure all wires and hoses away from exhaust system to prevent damage to electrical system. Failure to do so may result in electrical failure or fire.



FIG 1



FIG 2



FIG 3

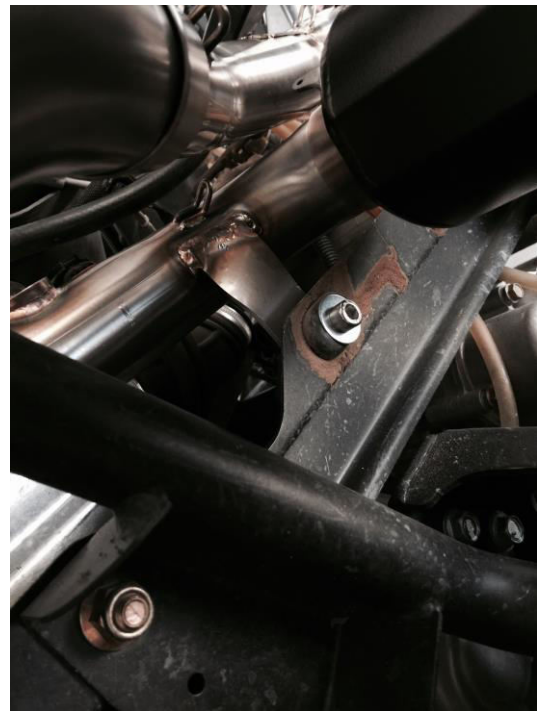


FIG4



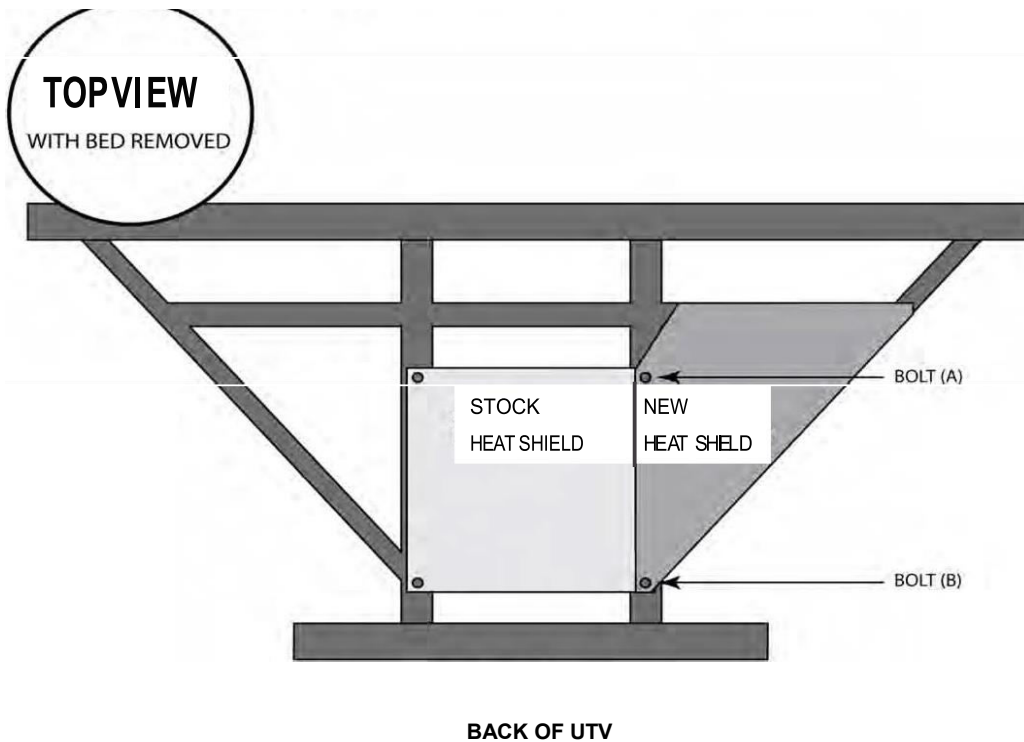
FIG 5



FIG 6

### HEAT SHIELD INSTALLATION INSTRUCTIONS

- 1) Remove bolt (A) and (B) from the bed cover.
- 2) Slide new heat shield between the frame and the bedcover. Align heat shield as illustration below
- 3) Re-install bolt (A) and (B)



### **WARNING**

\*Trinity Racing exhaust systems will require adjustment to OEM fuel settings such as jetting changes or installation of an EFI programmer. Trinity Racing will not be held responsible for damages that occur during operation of your vehicle under improper fuel settings. Ultimately, it is the responsibility of the owner/rider to adjust fuel settings to specific riding conditions and elevation changes before riding.

\*Inspection of the muffler packing is recommended following every 15 hours of runtime. Failure to maintain muffler packing will result in power loss, increased sound output, and damage to the muffler body or muffler components.

\*Trinity Racing exhausts systems are designed for high performance applications and are legal for closed course competition only. This product is not applicable nor intended for use on emissions controlled street, highway, or off-road vehicles.