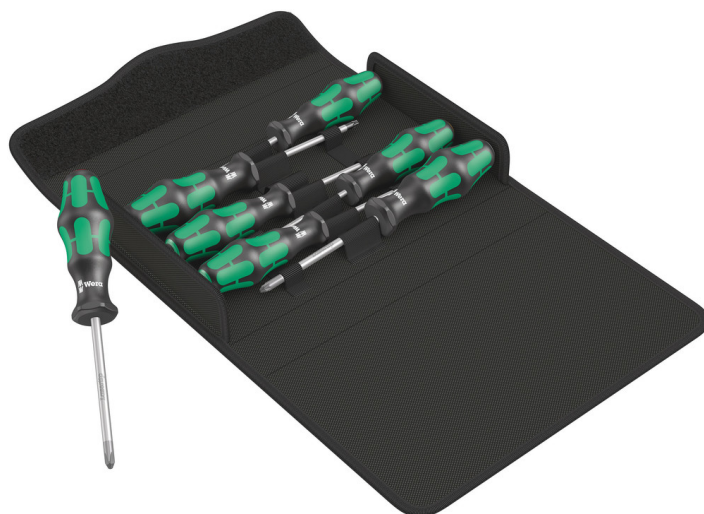


# Kraftform 300/7 set 1 Screwdriver set Kraftform Plus, 7 pieces

Kraftform Plus – Series 300



<b>EAN:</b>	4013288217608	<b>Size:</b>	275x175x60 mm
<b>Part number:</b>	05105623001	<b>Weight:</b>	921 g
<b>Article number:</b>	Kraftform 300/7 Set 1	<b>Country of origin:</b>	CZ
		<b>Customs tariff number:</b>	82054000

- 7-piece set in compact, textile box with Wera 2go compatibility
- Take it easy tool finder: colour coding according to profile and size
- Lasertip tips for more secure fit in the screw head
- Multi-component Kraftform handle for fast and ergonomic screwdriving
- Smooth hard zones for high speed turning, soft grip zones for high torque transfer

7-piece screwdriver set with Kraftform Plus handle for comfortable ergonomic screwdriving, which avoids blisters and calluses. Hard handle zones for high working speeds, while soft handle zones guarantee a high torque transfer. Includes some tools with Lasertip blades: The tip clings to the screw head and prevents it slipping out. Take it easy tool finder with colour coding and size stamping - for easy and fast location of the required tool. The anti-roll protection avoids bits from annoying rolling away in the workplace.



## Web link


[https://products.wera.de/en/screwdrivers\\_kraftform\\_plus\\_series\\_300\\_kraftform\\_300\\_7\\_set\\_1.html](https://products.wera.de/en/screwdrivers_kraftform_plus_series_300_kraftform_300_7_set_1.html)

Wera - Kraftform 300/7 Set 1  
05105623001 - 4013288217608


Wera Werkzeuge GmbH  
Korzter Straße 21-25  
D-42349 Wuppertal  
Tel: +49 (0)2 02 / 40 45-0  
E-Mail: [info@wera.de](mailto:info@wera.de)


Kraftform Plus – Series 300


Set contents:

 **350 PH**  
 05008710001 1 x PH 1 x 80 mm  
 05008720001 1 x PH 2 x 100 mm

 **367 TORX®**  
 05028008001 1 x TX 15 x 80 mm  
 05028010001 1 x TX 20 x 100 mm  
 05028012001 1 x TX 25 x 100 mm

 **K240**  
 1 x 50 x 240 mm

 **355 PZ**  
 05009315001 1 x PZ 2 x 100 mm

 **335**  
 05110004001 1 x 0.8 x 4 x 100 mm

Suitable for Wera 2go



Kraftform Screwdrivers Series 300



Suitable for docking with the Wera 2go system.

Lasertip prevents slipping out



It happens time and time again that the tip slips out of the screw head when screwdriving, sometimes damaging valuable surfaces or even causing injury. The tips of the Wera Lasertip screwdrivers are microscopically roughened by means of a laser. This rough surface literally "bites" itself firmly into the screw head. Slipping out becomes a thing of the past.

Lasertip



A precisely-focused laser creates a sharp-edged surface structure. This laser treatment results in an edge hardness of up to 1000 HV 0.3. Wera Lasertip "bites" itself into the screw head and prevents any slips out of the recess. It is available for screwdrivers for slotted, Phillips and Pozidriv screws.

Web link

[https://products.wera.de/en/screwdrivers\\_kraftform\\_plus\\_series\\_300\\_kraftform\\_300\\_7\\_set\\_1.html](https://products.wera.de/en/screwdrivers_kraftform_plus_series_300_kraftform_300_7_set_1.html)

Wera - Kraftform 300/7 Set 1  
 05105623001 - 4013288217608

Wera Werkzeuge GmbH  
 Korzter Straße 21-25  
 D-42349 Wuppertal  
 Tel: +49 (0)2 02 / 40 45-0  
 E-Mail: info@wera.de

Kraftform Plus – Series 300

Reduced contact pressure



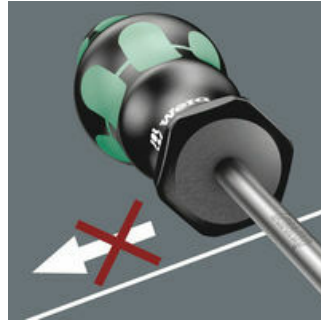
Wera Lasertip reduces the contact pressure required and enhances force transfer - meaning less screwdriving effort is required. Screwdriving becomes safer and easier.

Prevents hand injuries



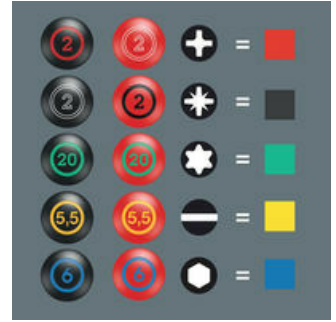
The outstanding design of the Kraftform handle that fits perfectly into the hand prevents hand injuries such as blisters and calluses.

Non-roll feature



The hexagonal non-roll feature prevents any rolling away at the workplace.

“Take it easy” Tool Finder



Screwdrivers with "Take it easy" tool finder: colour coding according to profile and size stamp.

Web link

[https://products.wera.de/en/screwdrivers\\_kraftform\\_plus\\_series\\_300\\_kraftform\\_300\\_7\\_set\\_1.html](https://products.wera.de/en/screwdrivers_kraftform_plus_series_300_kraftform_300_7_set_1.html)

Wera - Kraftform 300/7 Set 1  
05105623001 - 4013288217608

Wera Werkzeuge GmbH  
Korzter Straße 21-25  
D-42349 Wuppertal  
Tel: +49 (0)2 02 / 40 45-0  
E-Mail: info@wera.de