



# YOSHIMURA

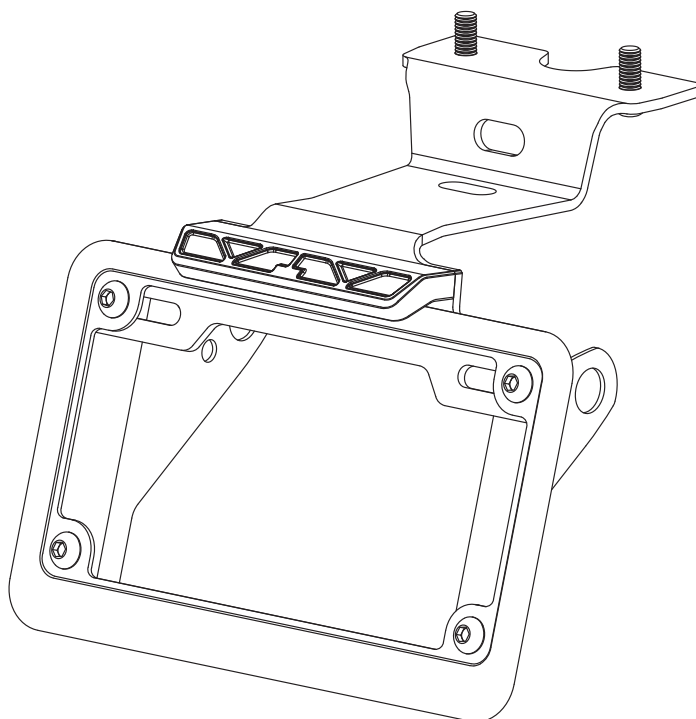
RESEARCH&DEVELOPMENT OF AMERICA, INC.

5420 DANIELS STREET STE A, CHINO CA., 91710 · (800) 634-9166 · (909) 628-4722 · FAX (909) 591-2198

**[www.yoshimura-rd.com](http://www.yoshimura-rd.com)**

## **FENDER ELIMINATOR KIT**

**070BG115000**  
**SUZUKI Katana**

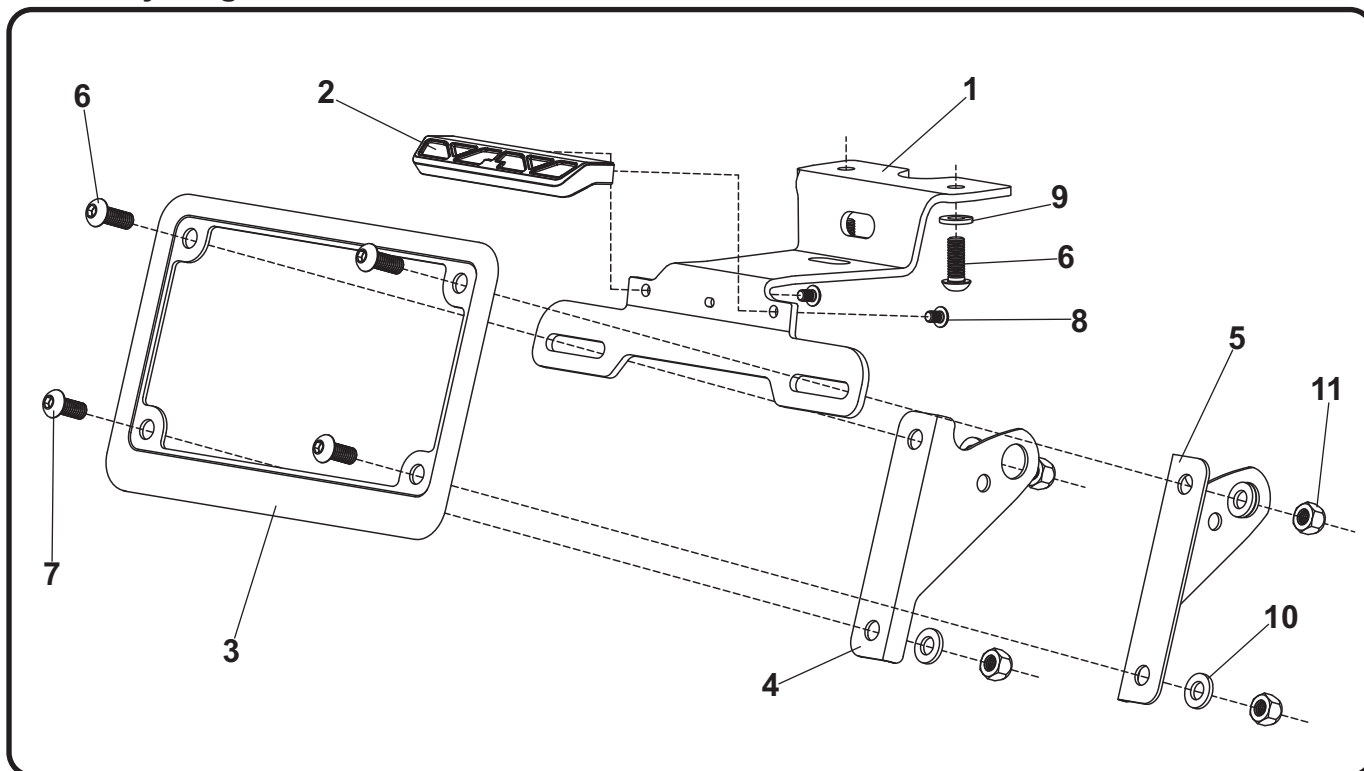


**THIS PRODUCT IS NOT DOT APPROVED.**

Yoshimura R&D of America, Inc. is not liable or responsible for any resulting event caused by the installation of this product. Check with local laws and regulations for compliance prior to installation and use. This product is not intended for use on public highways.



## Assembly Diagram



No.	Item	Description	Qty.
1	11500-FEBKT	Fender Eliminator Bracket	1
2	070BG-LH-K1	LED License Plate Light	1
3	070BG-LPF	License Plate Frame	1
4	11500-TSBKT-L	Left Turn Signal Bracket	1
5	11500-TSBKT-R	Right Turn Signal Bracket	1
6	M6X16BHS	6mm x 16mm Button Head Screw	4
7	M6X14BHS	6mm x 14mm Button Head Screw	2
8	M4X6BHS	4mm x 6mm Button Head Screw	2
9	6X10LW	6mm Lock Washer	2
10	6MMWASHER	6mm Flat Washer	4
11	6MMLN	6mm Nylon Lock Nut	4
**	BN-SSS-22-18	Solder Shrink Connectors	2
**	17100	Sticker Sheet	1
<i>Optional Accessories</i>			
	072BGLTSFK	Yoshimura LED Turn Signal Kit	
	072BGLTSFK-S	Yoshimura Sequential LED Turn Signal Kit	
	070BGUNVTBKT	Yoshimura Turn Signal Bracket Kit, Standard	
	070BG12121TSBKT	Yoshimura Turn Signal Bracket Kit, Corner	

\*\* Not shown in diagram

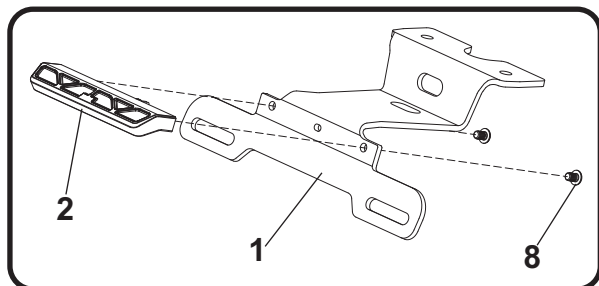
## Removal

1. Remove the two push rivets and two screws on rear fender holder and carefully remove the plastic rear fender cover on swingarm.
2. Locate and disconnect license plate light and turn signal connectors on rear fender bracket.
3. Remove the two bolts securing the license plate holder to rear fender bracket and carefully remove.
4. Remove the two bolts securing rear fender bracket to subframe and remove.
5. Remove rider and passenger seat.
6. Re-route license plate light and turn signal wires under rider seat and back toward undertail.
7. Disassemble and remove left and right turn signals from the stock license plate holder.
8. Cut the stock license plate light wires 2" from the license plate light.
9. Remove the two push rivets securing the fender cover beneath undertail and carefully remove fender cover.

Note: The fender cover will be cut and re-used with the Yoshimura fender eliminator kit.

## Installation

1. Install (No. 2) *070BG-LH-K1*, Yoshimura license plate light onto (No. 1) *11500-FEBKT*, fender eliminator bracket using (No. 8) *M4X6BHS*, 4mm button head screws.

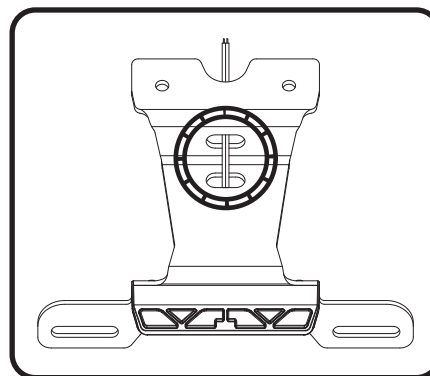


2. Route license plate light wire through hole in bracket and connect the Yoshimura license plate light wires to the stock license plate light wires as follows:

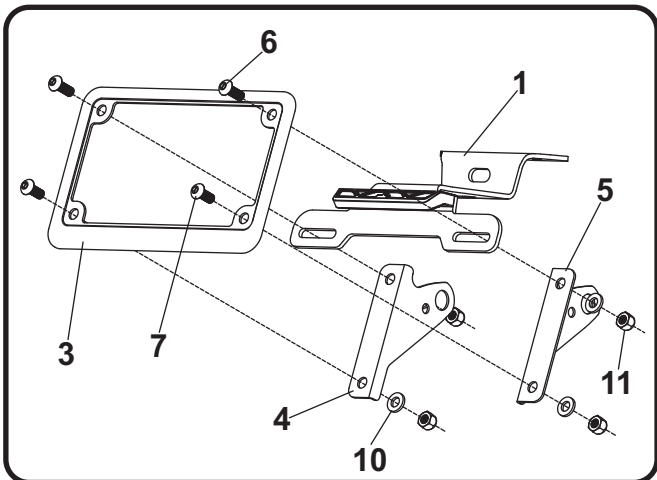
Red -to- White  
Black -to- Black/White

- a) Strip the stock license plate light wire ends 1/4" - 1/2" and insert into *BN-SSS-22-18*, solder shrink connectors provided in the kit.
- b) Center the spliced wire ends in the middle and using a heatgun or lighter, apply heat evenly on the outer edges of the solder shrink connector to shrink and hold wires in place.
- c) Making sure that the stripped ends are centered, heat the center of the solder ball connector evenly until the solder begins to liquify.
- d) Allow to cool completely and tug both ends of the wires to verify that connection is secured.

Scan for link to solder shrink connector instruction video.



3. Install left and right turn signals onto (No. 4,5) *11500-TSBKT-L/R*, turn signal brackets using the stock mounting hardware.
4. Assemble and install (No.3) *070BG-LPF*, license plate frame and (No. 4,5) *11500-TSBKT-L/R*, turn signal brackets to (No. 1) *11500-FEBKT*, fender eliminator bracket using (No 6,7) 6mm button head screws, (No. 10) *6MMWASHER*, 6mm washers, and (No. 11) *6MMLN*, 6mm nylon lock nuts as shown.



5. Route left and right turn signal wires through hole in bracket alongside the license plate light wire.

6. Follow steps below to cut stock undertail fender cover.

a) Measure 15mm from each side as shown and mark.

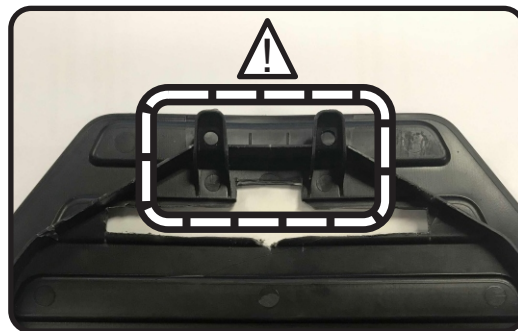
b) The total cut length in the middle will be 90mm. Measure and mark the centerline.

c) Measure and mark 7mm up for the notch cutout.

d) Measure and mark 9mm out in both directions from the centerline for the notch cutout. Total length for the notch will be 18mm.

e) Verify and confirm measurements as shown below and cut using rotary tool or razor blade. File edges smooth when finished.

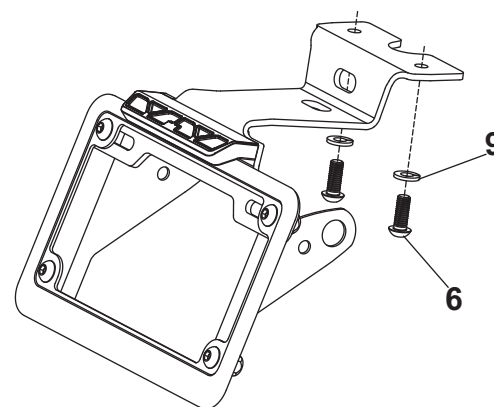
Note: Take precaution when cutting out the smaller notch and make sure not to damage the tabs on the backside of the undertail fender cover.



7. Route license plate light, turn signal wires, and fender eliminator bracket through undertail fender cover.

8. Secure fender eliminator bracket to subframe using (No. 6) M6X16BHS, 6mm screws and (No. 9) 6X10LW, 6mm lock washers.

Note: Take pre-caution when installing fender eliminator bracket and make sure not to over-bend the undertail fender cover.



9. Re-connect license plate and turn signal connectors.
10. Re-install undertail fender cover and secure using stock push rivets.
11. Reinstall rider and passenger seats.
12. Check for proper function of license plate light, turn signals and that all brackets and components are secure prior to riding.