



# YOSHIMURA

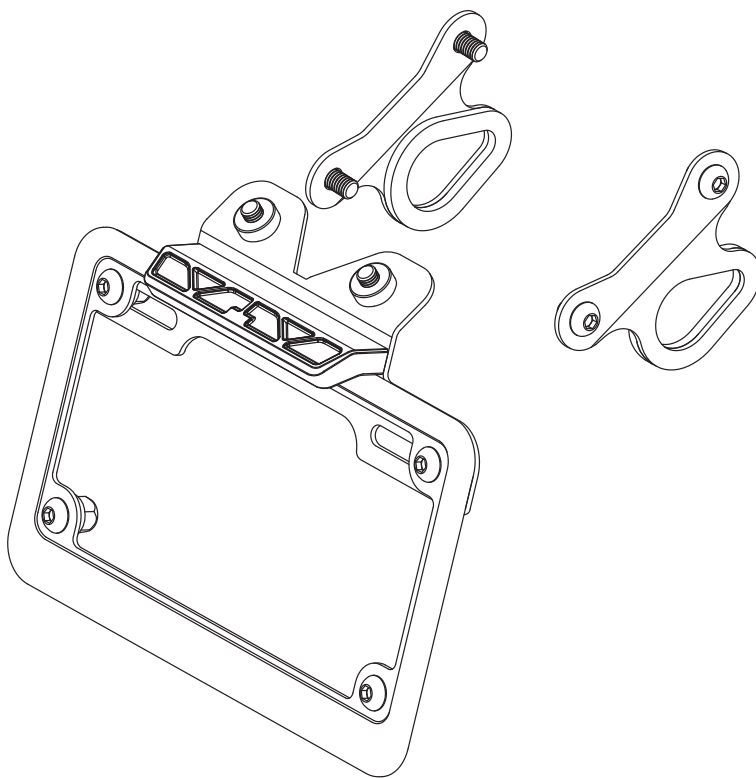
RESEARCH&DEVELOPMENT OF AMERICA, INC.

5420 DANIELS STREET STE A, CHINO CA., 91710 · (800) 634-9166 · (909) 628-4722 · FAX (909) 591-2198

**[www.yoshimura-rd.com](http://www.yoshimura-rd.com)**

## **FENDER ELIMINATOR KIT**

**070BG139600**  
**Yamaha XSR900**

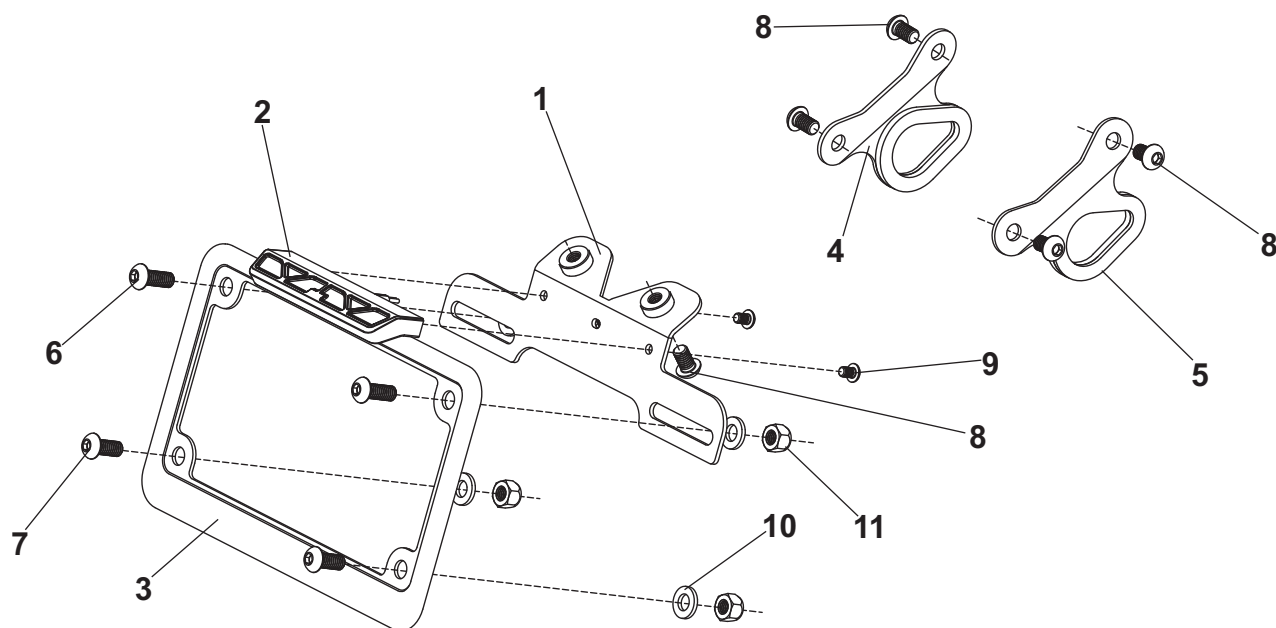


**THIS PRODUCT IS NOT DOT APPROVED.**

Yoshimura R&D of America, Inc. is not liable or responsible for any resulting event caused by the installation of this product. Check with local laws and regulations for compliance prior to installation and use. This product is not intended for use on public highways.



## Assembly Diagram



No.	Item	Description	Qty.
1	13960-FEBKT	Fender Eliminator Bracket	1
2	070BG-LH-K1	LED License Plate Light	1
3	070BG-LPF	License Plate Frame	1
4	13960-TSB00-L	Left Turn Signal Bracket	1
5	13960-TSB00-R	Right Turn Signal Bracket	1
6	M6X16BHS	6mm x 16mm Button Head Screw	2
7	M6X14BHS	6mm x 14mm Button Head Screw	2
8	M6X10BHS	6mm x 14mm Button Head Screw	6
9	M4X6BHS	4mm x 6mm Button Head Screw	2
10	6MMWASHER	6mm Washer	4
11	6MMLN	6mm Nylon Lock Nut	4
**	BN-SSS-22-18	Butt Connectors	2
**	17029	Yoshimura Sticker Sheet	1
<b>Optional Parts</b>			
072BGLTSFK		Yoshimura LED Front Turn Signal Kit	
072BGLTSR		Yoshimura LED Rear Turn Signal Kit w/ Relay	
070BGUNVTBKT		Universal Turn Signal Bracket Kit	

\*\* Not shown on diagram.

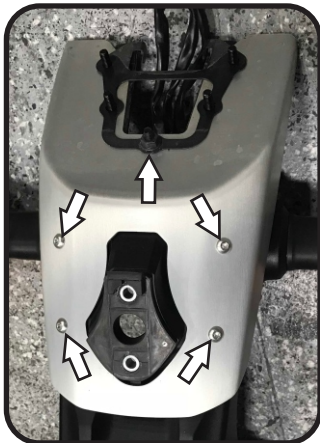
\*\*\* The Yoshimura Universal Turn Signal Bracket Kit is to be used with aftermarket stud-mounted turn signals and is sold separately.

## Removal

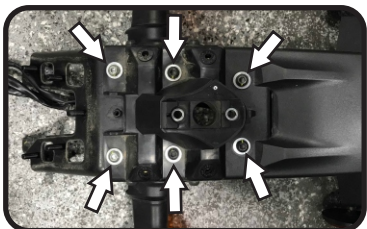
1. Remove rider seat.
2. Remove the four bolts securing seat latch bracket and set aside seat bracket to access rear fender nuts.



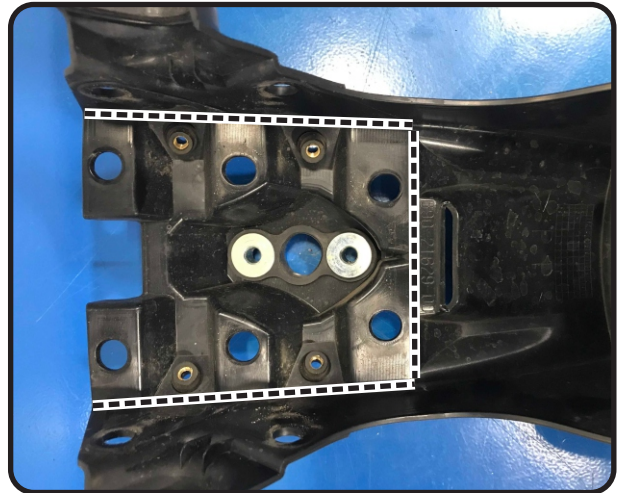
3. Locate and disconnect brake/tail light, license plate light, and rear turn signal connectors.
4. While securely supporting the stock fender assembly, remove the four fender nuts and carefully remove the stock fender assembly making sure not to damage connectors.
5. Disassemble the stock fender assembly.
  - Remove seat keyhole cover.
  - Remove the brake/tail light assembly.
  - Remove the upper fender cover.



- Remove left and right turn signals.
- Separate plastic fender from metal fender support bracket base.



6. Using masking tape and marker, mark and mask fender as shown. Cut and trim using a rotary tool and file edges smooth removing any burrs.

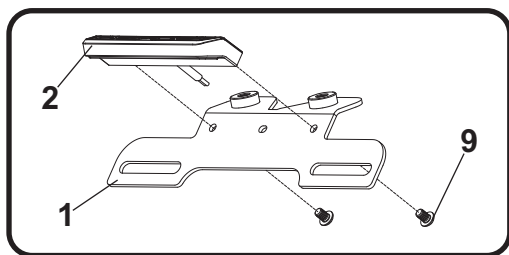


7. Cut the stock license plate light connector wires on the stock fender assembly side. Be sure to cut at least a 6" section of wire from the connector.
8. Trim keyhole cover as shown. File edges smooth.



## Installation

1. Install (No. 2) *070BG-LH-K1*, license plate light onto (No. 1) *13960-FEBKT*, fender eliminator bracket using (No. 9) *M4X6BHS*, 4mm button head screws.



2. Using the *BN-SSS-22-18*, butt connectors provided in the kit, connect the Yoshimura license plate light wires to the stock license plate light wires as follows:

Blue -to- Red Wire

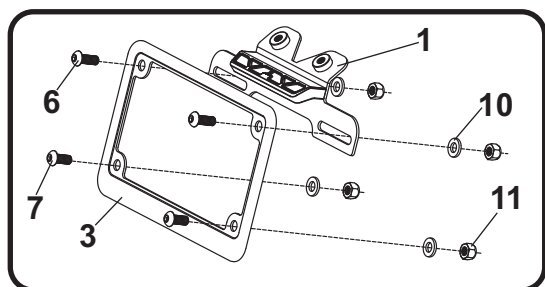
Black Wire -to- Black Wire

- a) Strip the stock fender light wire ends 1/4" - 1/2" and insert into *BN-SSS-22-18*, butt connectors provided in the kit.
- b) Center the spliced wire ends in the middle and using a heatgun or lighter, apply heat evenly on the outer edges of the butt connector to shrink and hold wires in place.
- c) Making sure that the stripped ends are centered, heat the center of the butt connector evenly until the solder begins to liquify.
- d) Allow to cool completely and tug both ends of the wires to verify that connection is secured.

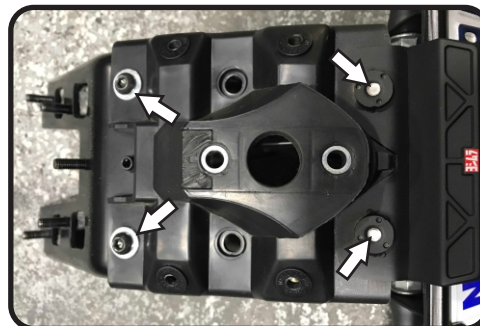
Scan for link to butt connector instruction video.



3. Secure (No. 3) *070BG-LPF*, license plate frame to (No. 1) *13960-FEBKT*, fender eliminator bracket using the hardware shown below.



4. Install the stock turn signals onto (No. 4,5) *13960-TSB00-L/R*, left and right turn signal brackets using the stock hardware.
5. Re-install trimmed plastic fender onto metal fender support bracket using the stock screws and install assembled fender eliminator bracket on top of plastic fender. Secure (No. 1) *13960-FEBKT*, fender eliminator bracket using (No. 8) *M6X10BHS*, 6mm screws from underneath.



6. Re-install upper fender cover using opposite steps of removal.
7. Re-install brake/tail light using opposite steps of removal.
8. Install (No. 4,5) *13960-TSB00-L/R*, left and right turn signal brackets on the sides of the fender support bracket using (No. 8) *M6X10BHS*, 6mm screws.
9. Route wires through stock location and re-install trimmed keyhole cover on the backside of the fender assembly.
10. Re-install fender assembly using the four fender nuts. Torque to factory specification.
11. Re-connect license plate light, brake/tail light, and turn signal connectors.
12. Re-install seat latch bracket and rider seat.
13. Check for proper function of license plate light, turn signals, brake light, and that all brackets and components are secure prior to riding.