



# YOSHIMURA

RESEARCH&DEVELOPMENT OF AMERICA, INC.

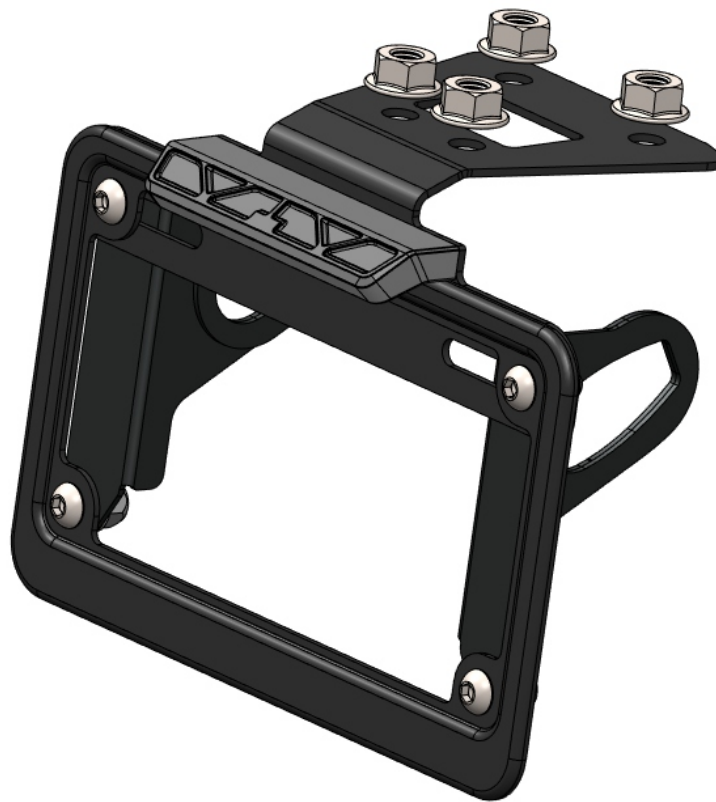
5420 DANIELS STREET STE A, CHINO CA., 91710 · (800) 634-9166 · (909) 628-4722 · FAX (909) 591-2198

[www.yoshimura-rd.com](http://www.yoshimura-rd.com)

## **FENDER ELIMINATOR KIT**

**070BG147300**

**Kawasaki Ninja 500 / Z500**

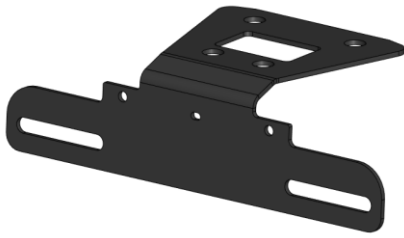


**THIS PRODUCT IS NOT DOT APPROVED.**

Yoshimura R&D of America, Inc. is not liable or responsible for any resulting event caused by the installation of this product. Check with local laws and regulations for compliance prior to installation and use. This product is not intended for use on public highways.

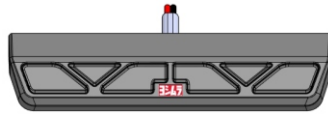


x1



14730-FEBKT  
Fender Eliminator Bracket

x1



070BG-LH-K1  
License Plate Light

x1



070BG-LPF  
License Plate Frame

x1



14200-TSL  
Left Turn Signal Bracket

x1



14200-TSR  
Right Turn Signal Bracket

x2



M6X16BHS  
6mm x 16mm  
Button Head Screw

x2



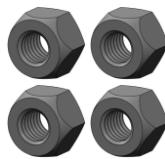
M6X14BHS  
6mm x 14mm  
Button Head Screw

x4



6MMWASHER  
6mm Washer

x4



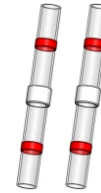
6MMLN  
6mm Lock Nut

x4



8MMNUT  
8mm Flange Nut

x2



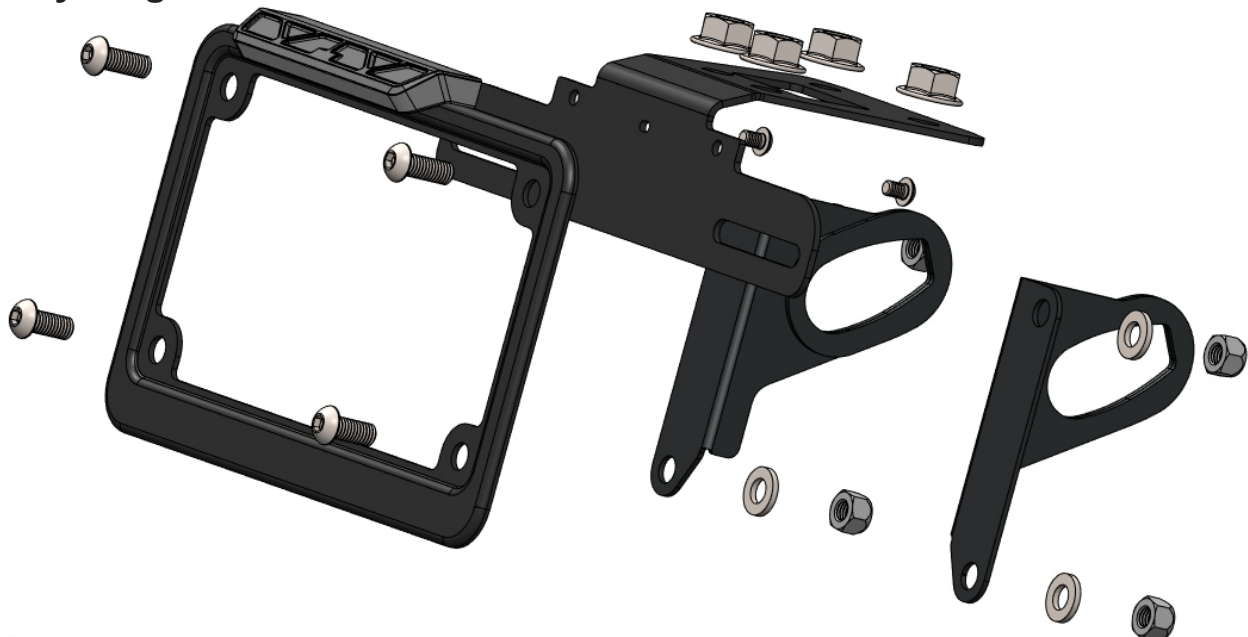
BN-SSS-22-18  
Solder Shrink Connector

x2



M4X6BHS  
4mm x 6mm  
Button Head Screw

### Assembly Diagram

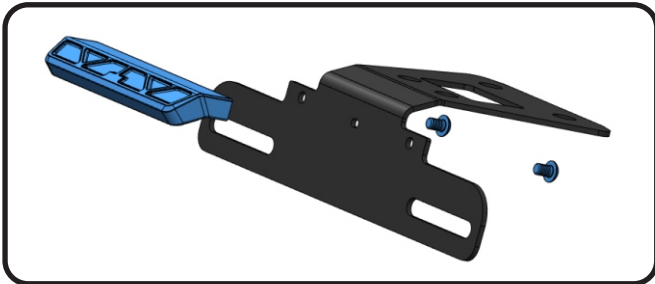


## Removal

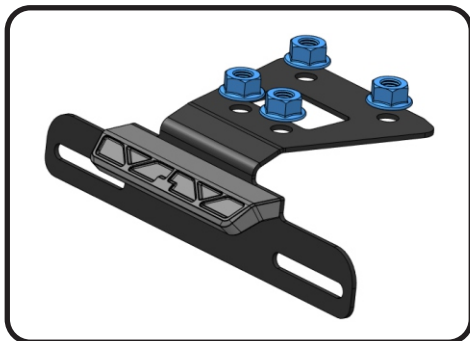
1. Remove passenger seat and lift tray to access the four fender bolts.
2. Locate and disconnect the license plate light and turn signal wires.
3. While securely supporting the stock fender assembly, remove the four bolts and carefully remove the stock fender assembly.
4. Disassemble the stock fender assembly and remove left and right turn signals.
5. Cut the stock license plate light connector from the stock fender assembly. Be sure to cut at least a 6" section of wire from the connector.

## Installation

1. Install *070BG-LH-K1*, Yoshimura license plate light onto *14730-FEBKT*, Yoshimura fender eliminator bracket using *M4X6BHS*, 4mm button head screws provided in the kit.



2. Install *14730-FEBKT*, fender eliminator bracket to subframe using the stock fender bolts and supplied *8MMNUT*, 8mm flange nuts. Torque bolts to factory specifications.



3. Using the *BN-SSS-22-18*, butt connectors provided in the kit, connect Yoshimura license plate light wires to the stock license plate light wires as follows:

Red -to- Red

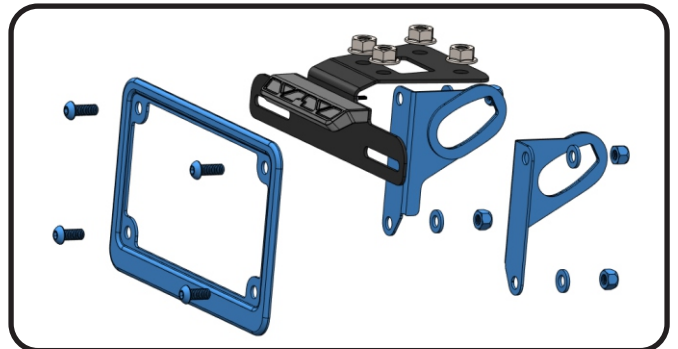
Black -to- Black w/ Yellow Stripe

- a) Strip the stock fender light wire ends 1/4" - 1/2" and insert into *BN-SSS-22-18*, solder connectors provided in the kit.
- b) Center the spliced wire ends in the middle and using a heatgun or lighter, apply heat evenly on the outer edges of the solder connector to shrink and hold wires in place.
- c) Making sure that the stripped ends are centered, heat the center of the solder connector evenly until the solder begins to liquify.
- d) Allow to cool completely and tug both ends of the wires to verify that connection is secured.

Scan for link to solder connector instruction video.



4. Install the stock left and right turn signals onto *14200-TSL/R*, turn signal brackets using the stock turn signal hardware.
5. Install *14200-TSL/R*, left and right turn signal brackets and *070BG-LPF*, license plate frame using *M6X14BHS* & *M6X16BHS*, 6mm screws, *6MMWASHER*, washers, and *6MMLN*, nuts as shown below.



6. Route license plate light and turn signal wires through hole in *14710-FEBKT*, fender eliminator bracket and then under the passenger seat. Reconnect license plate light and turn signal connectors.

7. Re-install passenger seat.
8. Check for proper function of license plate light, turn signals, brake light, and that all brackets and componets are secure prior to riding.