



YOSHIMURA

RESEARCH&DEVELOPMENT OF AMERICA, INC.

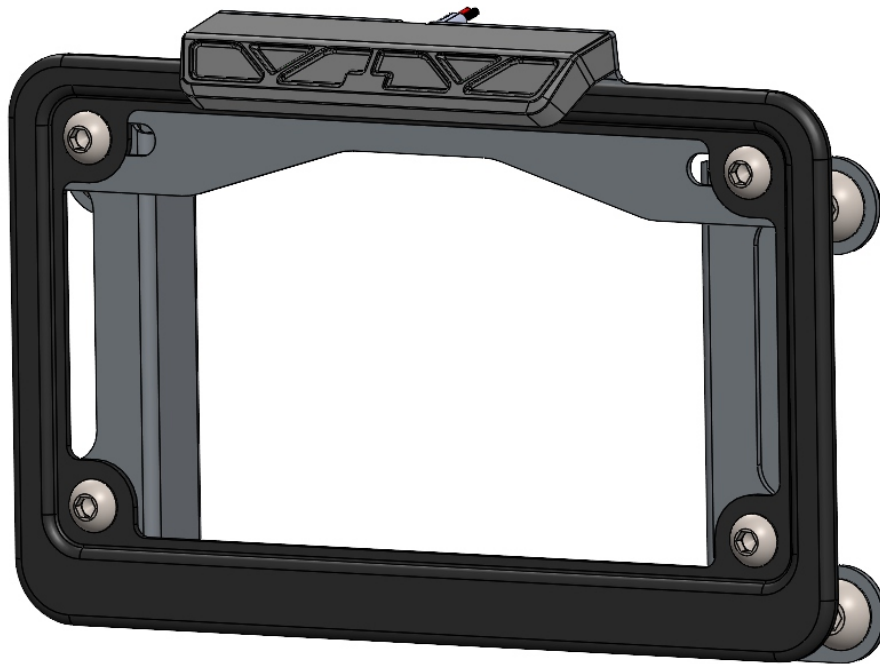
5420 DANIELS STREET STE A, CHINO CA., 91710 · (800) 634-9166 · (909) 628-4722 · FAX (909) 591-2198

www.yoshimura-rd.com

FENDER ELIMINATOR KIT

070BG191260

CFMOTO PAPIO SS / PAPIO CL



THIS PRODUCT IS NOT DOT APPROVED.

Yoshimura R&D of America, Inc. is not liable or responsible for any resulting event caused by the installation of this product. Check with local laws and regulations for compliance prior to installation and use. This product is not intended for use on public highways.

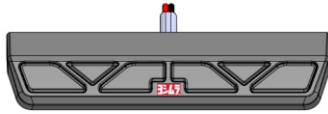


x1



19126-FEBKT
Plate Light Mounting Bracket

x1



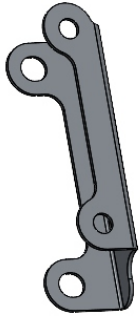
070BG-LH-K1
License Plate Light

x1



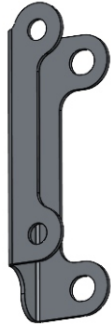
070BG-LPF
License Plate Frame

x1



19126-FEBKT-L
Left Mounting Bracket

x1



19126-FEBKT-R
Right Mounting Bracket

x2



M6X16BHS
6mm x 16mm
Button Head Screw

x4



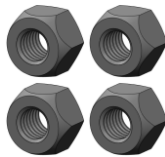
M8X12BHS
8mm x 12mm
Button Head Screw

x4



6MMWASHER
6mm Washer

x4



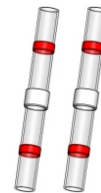
6MMLN
6mm Lock Nut

x2



M6X14BHS
6mm x 14mm
Button Head Screw

x2



BN-SSS-22-18
Solder Shrink Connector

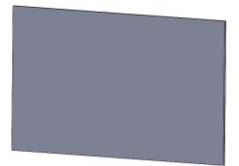
x2



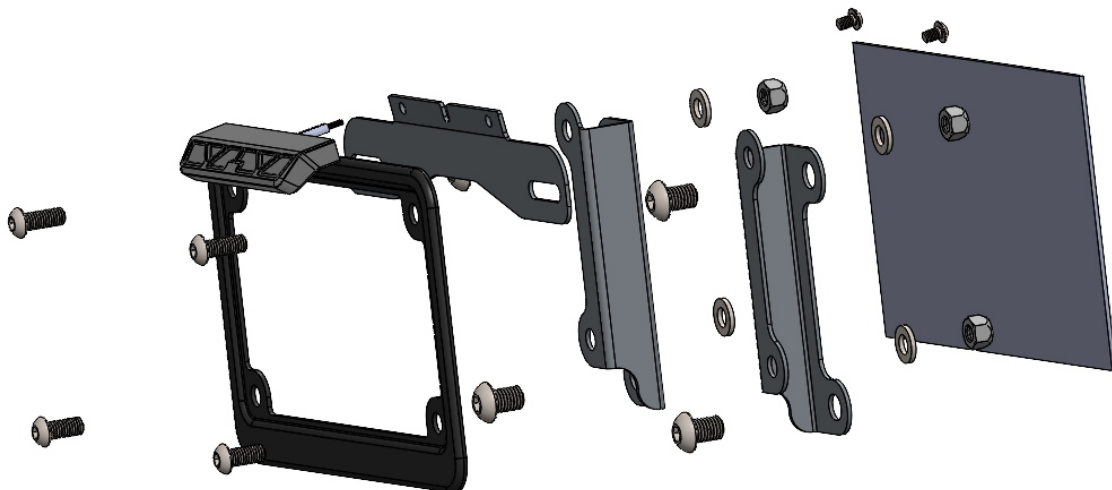
M4X6BHS
4mm x 6mm
Button Head Screw

Assembly Diagram

x1



HT FOIL4-0725
Aluminum Foil Tape

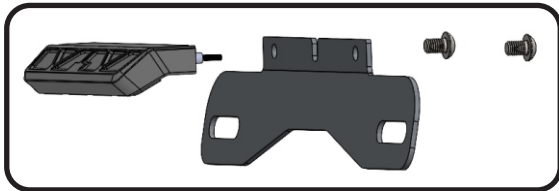


Removal

1. Remove the rider and passenger seat, as well as the passenger foot pegs.
2. Locate and disconnect the license plate light and turn signal connectors.
3. While securely supporting the stock fender assembly, remove the bolts securing the stock fender to the swing arm and carefully remove the stock fender assembly making sure not to damage license plate light and turn signal connectors.
4. Disassemble the stock fender assembly and remove left and right turn signals.
5. Cut the stock license plate light connector from the stock fender assembly. Be sure to cut at least a 6" section of wire from the connector.

Installation

1. Install *070BG-LH-K1*, Yoshimura license plate light onto *19126-FEBKT*, Yoshimura fender eliminator bracket using *M4X6BHS*, 4mm button head screws provided in the kit.



2. Using the *BN-SSS-22-18*, solder shrink connectors supplied in the kit, connect Yoshimura license plate light wires to the stock license plate light wires as follows:

Red -to- Brown
Black -to- Green

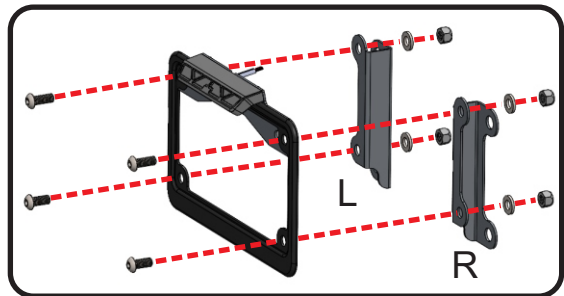
- a) Strip the stock fender light wire ends 1/4" - 1/2" and insert into *BN-SSS-22-18*, solder shrink connectors provided in the kit.
- b) Center the spliced wire ends in the middle and using a heatgun or lighter, apply heat evenly on the outer edges of the solder connector to shrink and hold wires in place.
- c) Making sure that the stripped ends are centered, heat the center of the solder connector evenly until the solder begins to liquify.

- d) Allow to cool completely and tug both ends of the wires to verify that connection is secured.

Scan for link to solder shrink connector instruction video.



3. Install *19126-FEBKT-L/R* mounting brackets to frame using *M8X12BHS*, 8mm bolts included in the kit. Torque bolts to factory specifications.
4. Cut the sides of *HT-FOIL4-0725* heat foil tape to fit between *19126-FEBKT-L/R* mounting brackets. Press the license plate light wire flat against the back of the license plate and apply *HT-FOIL4-0725* heat foil tape to the back of the license plate, covering the license plate light wire.
5. Install *070BG-LPF*, license plate frame onto *19126-FEBKT-L/R* mounting brackets using *M6X16BHS* & *M6X14BHS*, 6mm screws, *6MMWASHER*, washers, and *6MMLN*, nuts as shown below.



Note: *M6X16BHS* screws are for the top holes and *M6X14BHS* screws are for the bottom holes.

5. Route license plate light and turn signal wires through hole in fender bracket. Then continue to route license plate light wire and turn signal wires straight into the bike under where the seat would be, and re-connect connectors.
6. Re-install rider and passenger seat.
7. Check for proper function of license plate light, turn signals, brake light, and that all brackets and components are secure prior to riding.