



# YOSHIMURA

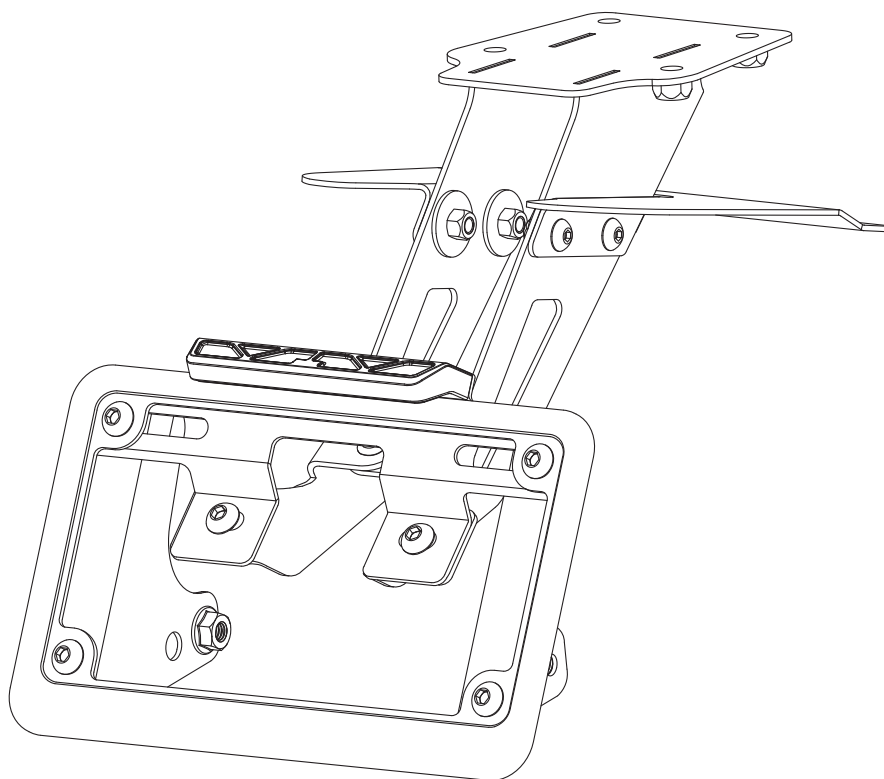
RESEARCH&DEVELOPMENT OF AMERICA, INC.

5420 DANIELS STREET STE A, CHINO CA., 91710 · (800) 634-9166 · (909) 628-4722 · FAX (909) 591-2198

**[www.yoshimura-rd.com](http://www.yoshimura-rd.com)**

## ***FENDER ELIMINATOR KIT***

**070BG197000**  
***Triumph Speed Triple***

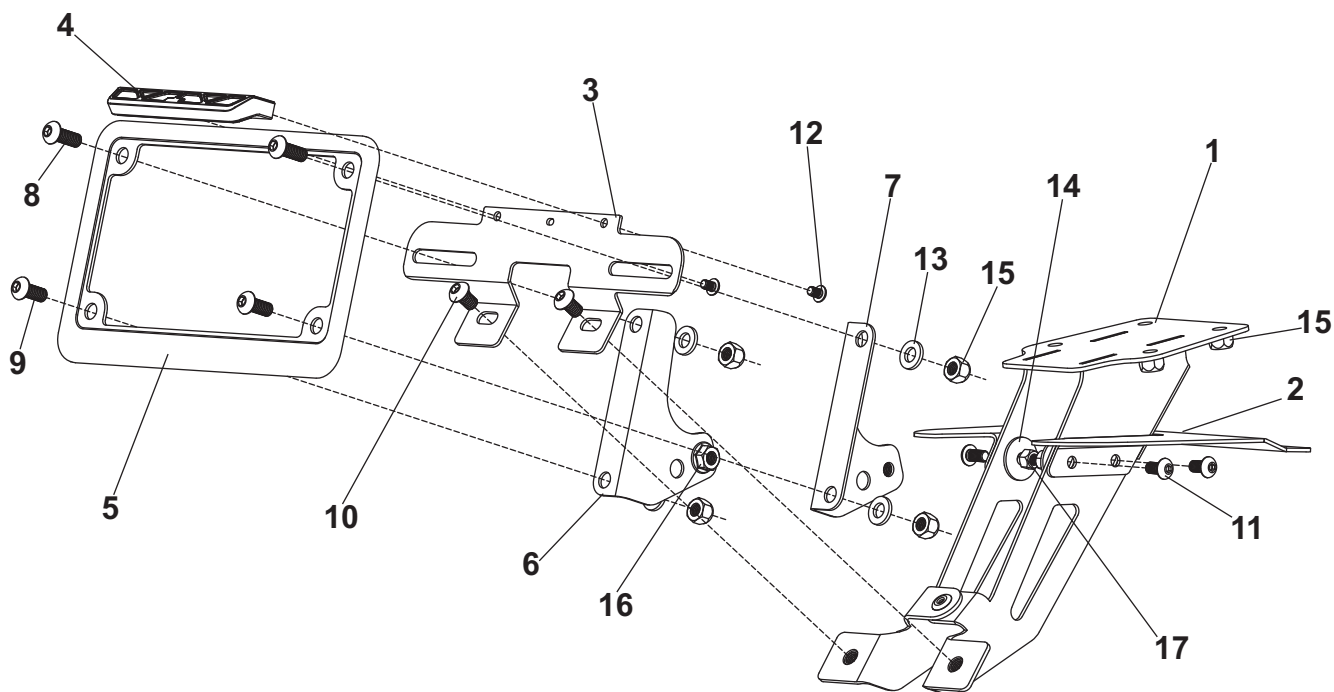


**THIS PRODUCT IS NOT DOT APPROVED.**

Yoshimura R&D of America, Inc. is not liable or responsible for any resulting event caused by the installation of this product. Check with local laws and regulations for compliance prior to installation and use. This product is not intended for use on public highways.



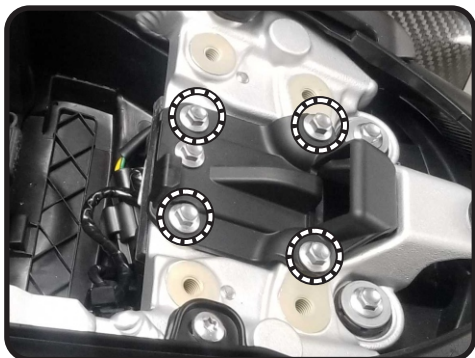
## Assembly Diagram



No.	Item	Description	Qty.
1	19700-FEBKT	Fender Eliminator Bracket	1
2	19700-FEBKT3	Fender Bracket Shroud	1
3	12200-FEBKT	License Plate Bracket	1
4	070BG-LH-K1	LED Light	1
5	070BG-LPF	License Plate Frame	1
6	19700-TSBKT-L	Left Turn Signal Bracket	1
7	19700-TSBKT-R	Right Turn Signal Bracket	1
8	M6X16BHS	6mm x 16mm Button Head Screw	2
9	M6X14BHS	6mm x 14mm Button Head Screw	2
10	M6X10BHS	6mm x 10mm Button Head Screw	2
11	M5X10	5mm x 10mm Button Head Screw	4
12	M4X6BHS	4mm x 6mm Button Head Screw	2
13	6MMWASHER	6mm Washer	4
14	5MMWASHER	5mm Washer	4
15	6MMLN	6mm Nylon Lock Nut	8
16	M6X1HN	6mm Flange Nut	2
17	5MMLN-U	5mm Lock Nut	4
**	17100	Yoshimura Sticker Kit	1
**	BN-SSS-22-18	Solder Shrink Connectors	2
**	ZT-400	Cable Ties	4
<b>Optional Parts (sold separately)</b>			
	073BG-TRI	Turn Signal Adapter	
	072BGLTSFK	Yoshimura LED Turn Signal	
	070BGUNVTBKT	Universal Turn Signal Bracket Kit	

## Removal

1. Remove passenger seat.
2. Locate and disconnect fender sub-harness connector.
3. While securely supporting the stock fender assembly, remove the four bolts securing the fender assembly to the subframe. Carefully remove the stock fender assembly making sure not to damage the connectors in the process.



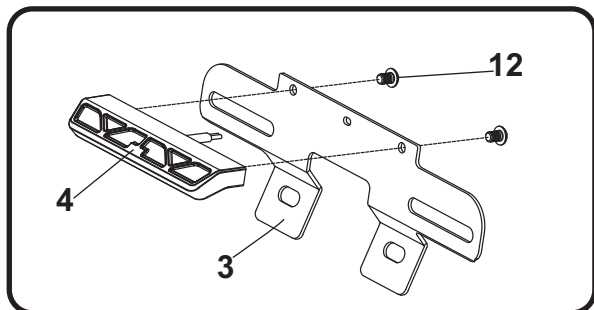
4. Disassemble the stock fender assembly and remove the left and right turn signals.

Note: The stock fender sub-harness will be re-used. Carefully remove from stock fender assembly.

5. Cut the stock license plate light connector from the stock fender assembly. Cut wires 2-3" from the license plate light bulb.

## Installation

1. Install (No. 4) 070BG-LH-K1, light onto (No. 3) 12200-FEBKT, license plate bracket. Secure using (No. 12) M4X6BHS, 4mm screws.



2. Connect the Yoshimura license plate light wires to the stock license plate light wires as follows:

Red -to- Yellow

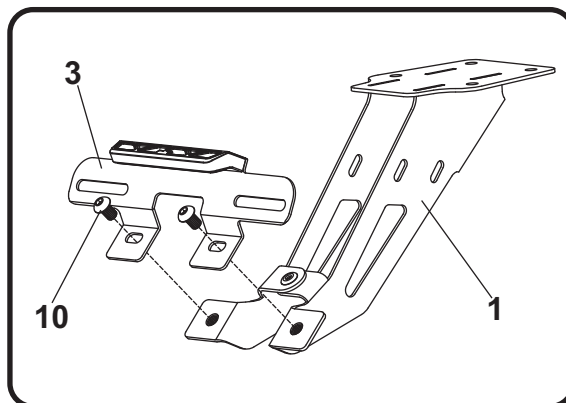
Black -to- Black

- a) Strip the stock fender light wire ends 1/4" - 1/2" and insert into *BN-SSS-22-18*, solder shrink connectors provided in the kit.
- b) Center the spliced wire ends in the middle and using a heatgun or lighter, apply heat evenly on the outer edges of the solder shrink connector to shrink and hold wires in place.
- c) Making sure that the stripped ends are centered, heat the center of the solder shrink connector evenly until the solder begins to liquify.
- d) Allow to cool completely and tug both ends of the wires to verify that connection is secured.

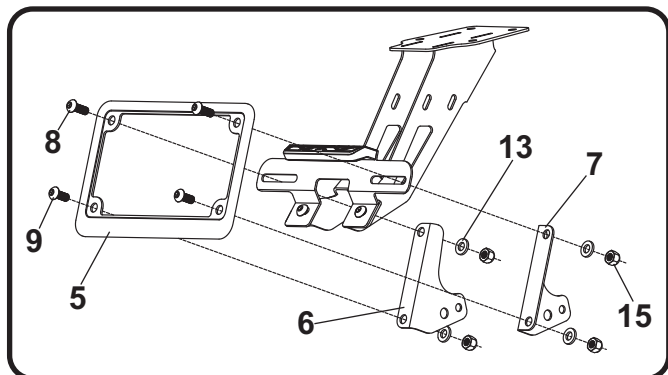
Scan for link to solder shrink connector instruction video.



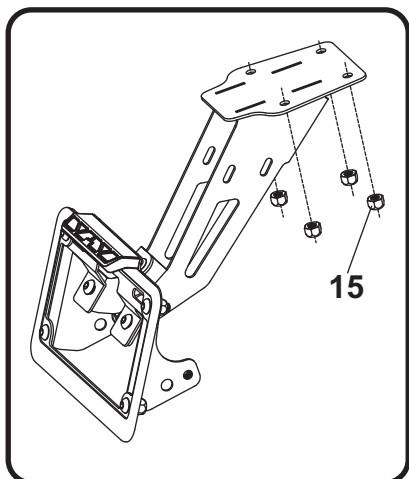
3. Install left and right turn signals onto (No. 6,7) 19700-TSBKT-L/R, turn signal brackets. Secure using (No. 16) M6X1HN, 6mm flange nuts.
4. Install (No. 3) 12200-FEBKT, license plate bracket onto (No. 1) 19700-FEBKT, fender eliminator bracket using (No. 10) M6X10BHS, 6mm screws as shown.



5. Assemble and install (No. 5) *070BG-LPF*, license plate frame and (No. 6,7) *19700-TSBKT-L/R*, left and right turn signal brackets to (No. 3) *12200-FEBKT*, license plate bracket using (No. 8,9) 6mm button head screws, (No. 13) *6MMWASHER*, 6mm washers, and (No. 15) *6MMLN*, 6mm nylon lock nuts as shown below.

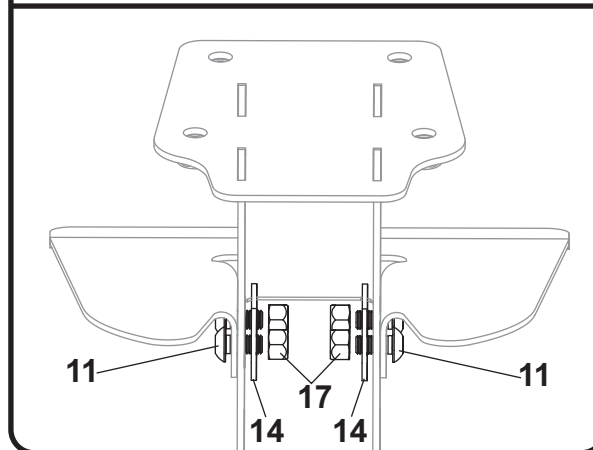
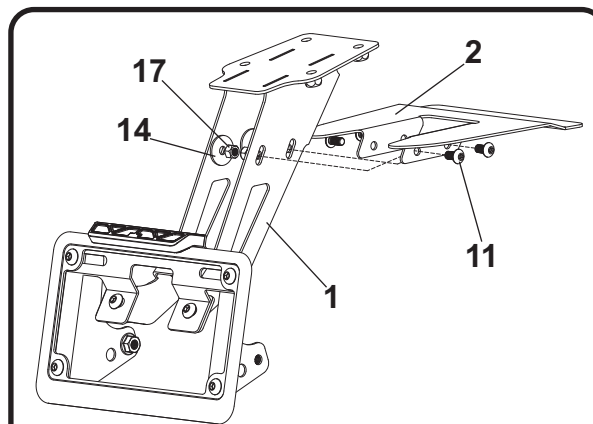


6. Install (No. 1) *19700-FEBKT*, fender eliminator bracket to subframe using the stock fender bolts and (No. 15) *6MMLN*, 6mm lock nuts as shown.



7. Install (No. 2) *19700-FEKBKT3*, fender bracket shroud onto (No. 1) *19700-FEBKT*, fender bracket using (No. 11) *M5X10*, 5mm screws, (No. 14) *5MMWASHER*, 5mm washers, and (No. 17) *5MMLN-U*, 5mm lock nuts as shown.

Note: The shroud mounting holes on the fender bracket are slotted for adjustment. Tighten shroud screws when desired fitment has been achieved.



8. Route license plate light and turn signal wires through undertail and reconnect to fender sub-harness.
9. Using the *ZT-400*, cable ties supplied in the kit, secure license plate light and turn signal wires along the side of fender bracket.
10. Re-connect fender sub-harness connector and re-install passenger seat.
11. Check for proper function of license plate light and turn signals and that all brackets and components are secure prior to riding.