



YOSHIMURA

RESEARCH&DEVELOPMENT OF AMERICA, INC.

5420 DANIELS STREET STE A, CHINO CA., 91710 · (800) 634-9166 · (909) 628-4722 · FAX (909) 591-2198

www.yoshimura-rd.com

RACE SERIES

Qualified Manufacturer Declared "Modified Part"

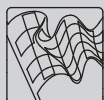
2021 ~ 2022

Yamaha Tenere 700

13710AS520 (SS/CF)

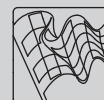
RS-12 Full-System

FOR CLOSED COURSE COMPETITION ONLY; NOT INTENDED FOR STREET USE



Race Series systems are:

- NOT CARB/EPA tail-pipe emissions compliant.
- NOT street legal.
- For "Closed Course Competition" use only.

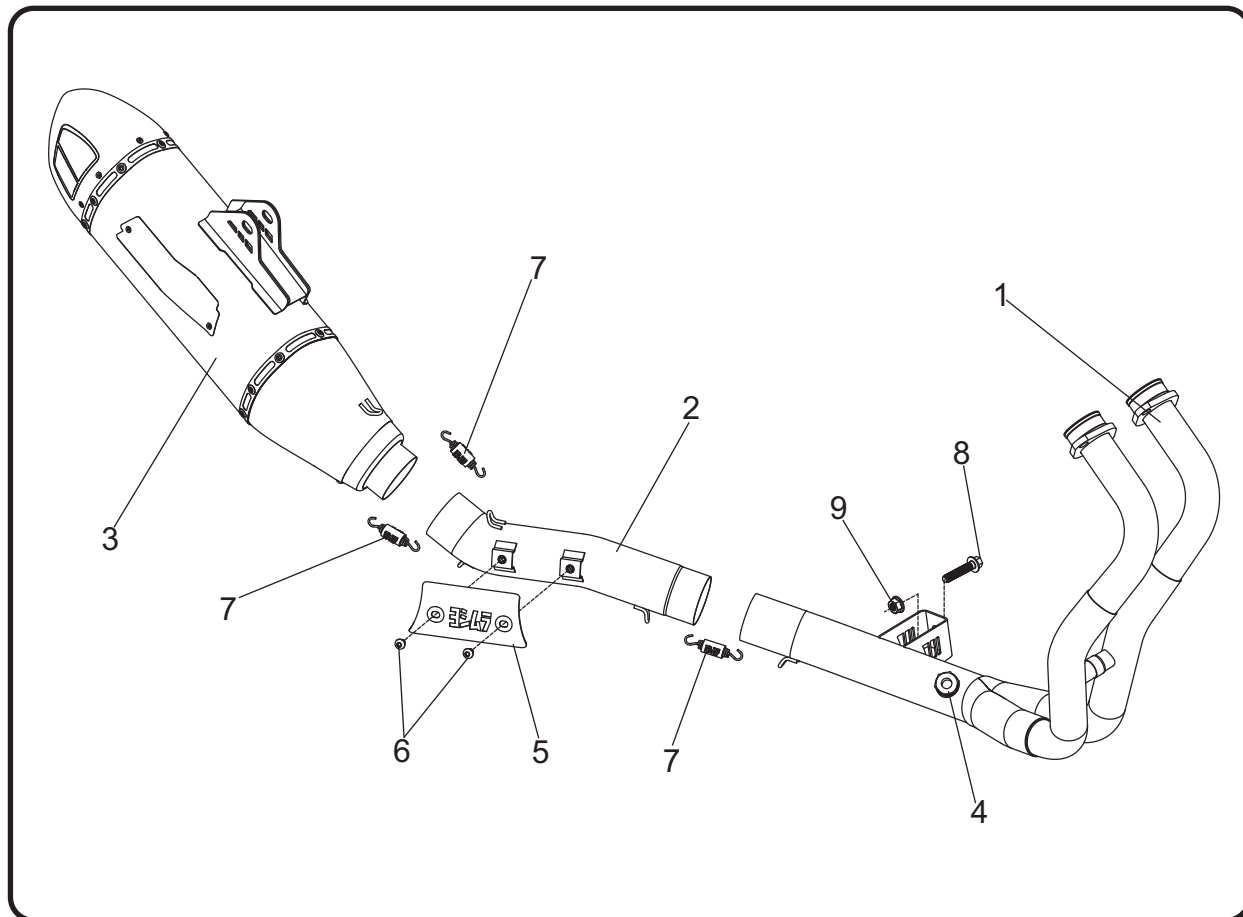


You must know how to remove and replace your stock exhaust in order to install this product otherwise have it installed by a professional mechanic. Keep all stock parts from your existing system as some components may be necessary to install your new Yoshimura exhaust depending on the application. Read through all instructions before beginning installation. Exhaust system can be extremely hot. Let motorcycle cool down before beginning installation. Always wear hand and eye protection and take precautionary measures to avoid injury.



NOTE: IN THE STATE OF CALIFORNIA, IT IS ILLEGAL TO MODIFY THE EMISSION CONTROL SYSTEM, WHICH INCLUDES THE CARBURETORS OF ANY VEHICLE.

Assembly Diagram



No.	Item	Description	Qty.
1	13710-401D	Yoshimura Header	1
2	13710-421D	Yoshimura Tailpipe	1
3	13710BS520-RMA	Yoshimura Muffler Assembly	1
4	OXYBA12X125SS	O2 Sensor Adapter	1
5	13710-HS2	Tailpipe Heatshield	1
6	RC116HSB-BK-P	6mm x 8mm Black Heatshield Screw	2
7	RACE-SPS-1	Medium Exhaust Spring	3
8	M8X40H	8mm x 40mm Flanged Hex Head Bolt	1
9	8MMNUT	8mm Flange Nut	1
**	B6450	O2 Sensor Extension	1
**	347PLUG	Yoshimura Wash Plug	1
**	ST-200	Spring Puller	1
**	17100	Sticker Sheet	1

** Not shown on diagram.

CAUTION: Exhaust system can be extremely hot. Let motorcycle cool down before beginning installation. Always wear hand and eye protection and take precautionary measures to avoid injury.

WARNING: Always properly support vehicle with a stand and/or lift when servicing or performing any work. Unstable vehicles may present dangerous conditions and may cause property damage and/or personal injury.

NOTE: Read through all instructions before beginning installation.

Removal

1. Loosen the stock exhaust clamp at the muffler and header connection.
2. While securely supporting the stock muffler, remove the muffler mount bolt and carefully remove the stock muffler assembly.

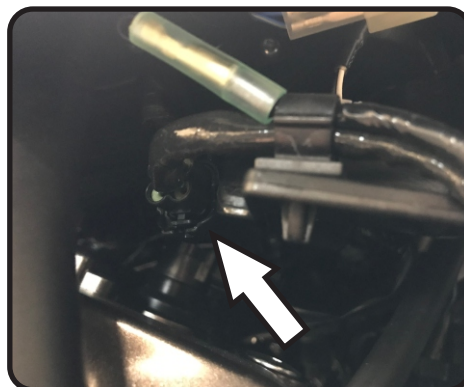
Note: The stock muffler mount bolt, washer, and nut will be re-used with the Yoshimura system.

3. Remove the skid plate bolts and carefully remove the stock skid plate.
4. Remove O2 sensor from the stock header.

Note: Unclip the lower wire clip if extra slack is required for the O2 sensor wire.



For 2022~ models, remove right front cover to access O2 sensor connector and disconnect. Unclip O2 sensor wire along frame and remove stock O2 sensor.

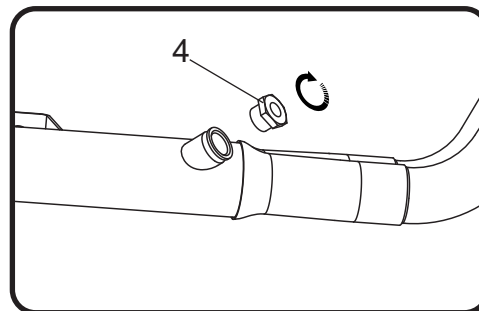


5. While securely supporting the stock header, remove header nuts and chassis mount bolt and carefully remove the stock header.

Note: The stock exhaust port gaskets will be re-used with the Yoshimura full-system. Inspect and replace if necessary.

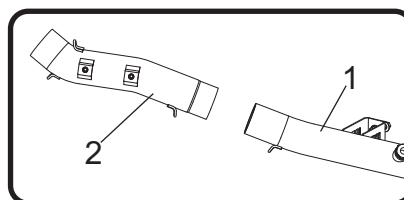
Installation

1. Install (No. 1) 13710-401D, header using the stock header nuts. Align header chassis mount bracket to chassis mount and secure using (No. 8) M8X40H, 8mm bolt and (No. 9) 8MMNUT, 8mm flange nut as shown on the assembly diagram. Do not torque header nuts and header chassis mount bolt at this time.
2. Install (No. 4) OXYBA12X125SS, O2 sensor bung adapter into (No. 1) 13710-401D, header. Re-install stock O2 sensor and torque to factory specifications. Secure O2 sensor wire to clip.

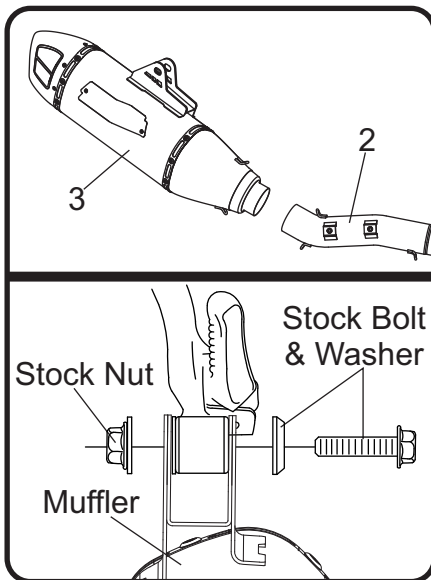


For 2022~ models, connect B6450 O2 sensor wire extension to the stock O2 sensor. Route wire to stock location, secure to frame clips, and reconnect connector.

3. Install (No. 2) 13710-421D, tailpipe inlet onto (No. 1) 13710-401D, header outlet.



4. Install (No. 3) *13710BS520-RMA*, muffler assembly onto (No. 2) *13710-421D*, tailpipe outlet and align muffler bracket to the muffler mount. Secure using the stock bolt, washer, and nut as shown.



5. Torque muffler mount bolt to factory specifications.
6. Torque header nuts and header chassis mount bolt to factory specifications.
7. Install (No. 7) *RACE-SPS-1*, exhaust springs between header to tailpipe connection and between muffler to tailpipe connection.
8. Install (No. 5) *13710-HS2*, tailpipe heatshield using (No. 6) *RC116HSB-BK-P*, heatshield screws.
9. Re-install stock skid plate using reverse steps of removal.
10. Before starting vehicle, check for proper clearance between new exhaust system and rear suspension (i.e. tire, swingarm, brakes, rear shock, and etc.) If any problem is found, please carefully follow through the installation steps again. If problem still persists, please call Yoshimura Tech Department at (800) 634-9166 / in CA (909) 628-4722.
11. It is recommended that the muffler and tailpipe be wiped down with rubbing alcohol to remove oil and fingerprints. This will help prevent tarnishing of the finish after the exhaust is heated up.