



YOSHIMURA

RESEARCH&DEVELOPMENT OF AMERICA, INC.

5420 DANIELS STREET STE A, CHINO CA., 91710 · (800)634-9166 · (909)628-4722 · FACSIMILE (909)591-2198

www.yoshimura-rd.com

RACE SERIES

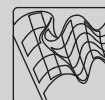
Kawasaki ZX-14R
1414108550 (SS/SS)

R-55 Stainless Steel Full-System



Race Series systems are:

- NOT CARB/EPA tail-pipe emissions compliant.
- NOT street legal.
- For "Closed Course Competition" use only.

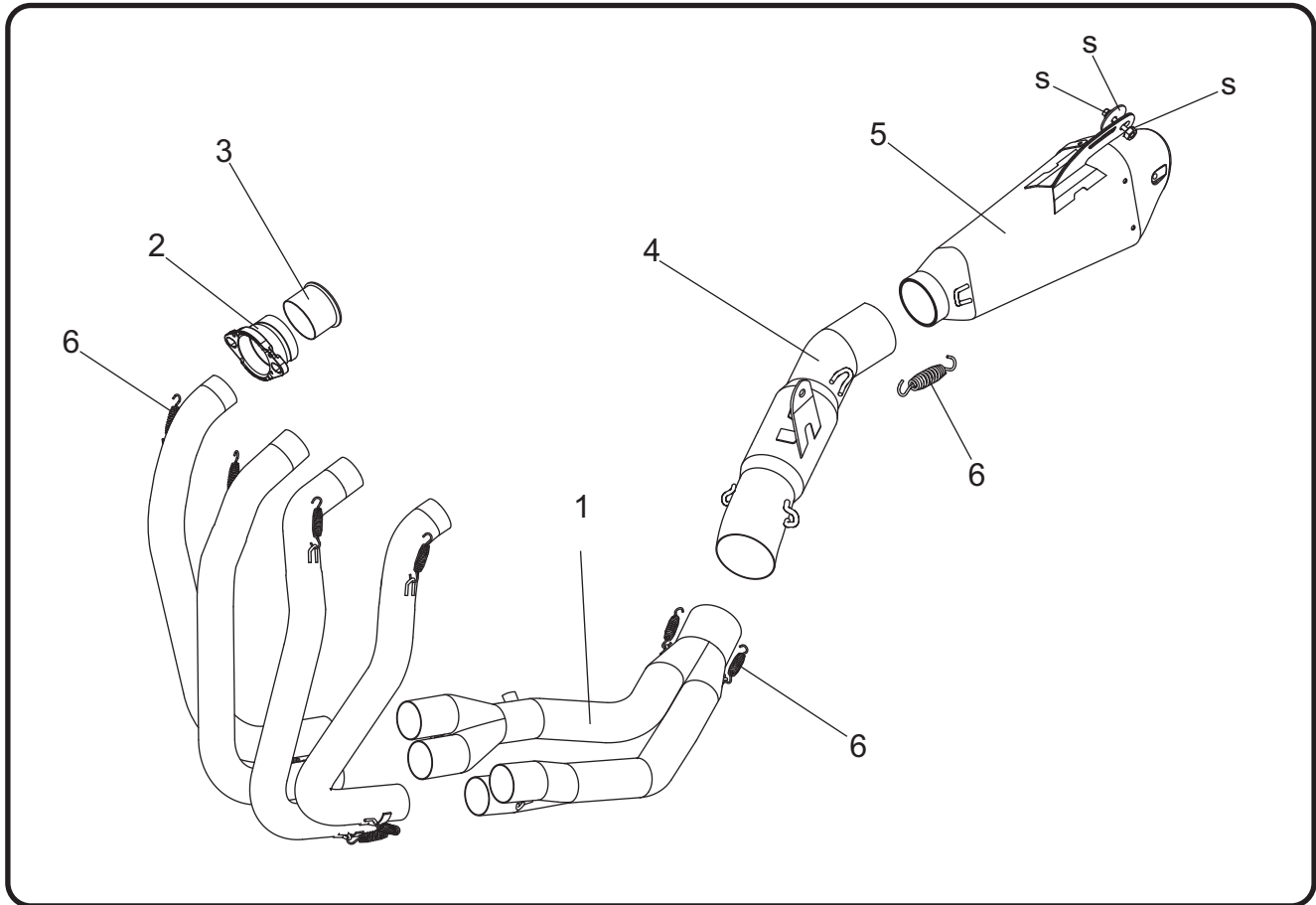


You must know how to remove and replace your stock exhaust in order to install this product otherwise have it installed by a professional mechanic. Keep all stock parts from your existing system as some components may be necessary to install your new Yoshimura exhaust depending on the application. Read through all instructions before beginning installation. Exhaust system can be extremely hot. Let motorcycle cool down before beginning installation. Always wear hand and eye protection and take precautionary measures to avoid injury.



NOTE: IN THE STATE OF CALIFORNIA, IT IS ILLEGAL TO MODIFY THE EMISSION CONTROL SYSTEM, WHICH INCLUDES THE CARBURETORS OF ANY VEHICLE.

Assembly Diagram



| No. | Item | Description | Qty. |
|-----|----------------|-----------------------|------|
| 1 | 1426-404-1 | Yoshimura Header | 1 |
| 2 | CB916SDR-01 | Yoshimura Flange | 4 |
| 3 | R795SDM | Yoshimura Manifold | 4 |
| 4 | 1426-419-1 | Yoshimura Tailpipe | 1 |
| 5 | 1414008551-RMA | Yoshimura Muffler | 1 |
| 6 | RACE-SPS-1 | Medium Exhaust Spring | 7 |
| ** | M12X8H | O2 Sensor Plug | 1 |
| ** | ST-200 | Spring Puller Tool | 1 |
| ** | 17029 | Sticker Kit Sheet | 1 |

** Not shown in diagram.

Removal

1. Remove rear lower cowl to ease access to the stock muffler clamps.
2. Loosen left and right exhaust clamps.
3. While securely supporting the muffler, remove the muffler mount bolt and carefully remove the stock muffler. Repeat for opposite side.
4. Remove left and right fairings as per Factory Service/Owners Manual.
5. Remove the lower radiator support bracket and tilt the radiator forward to ease removal of the stock header.
6. While securely supporting the stock header, remove the header nuts and carefully remove the stock header.

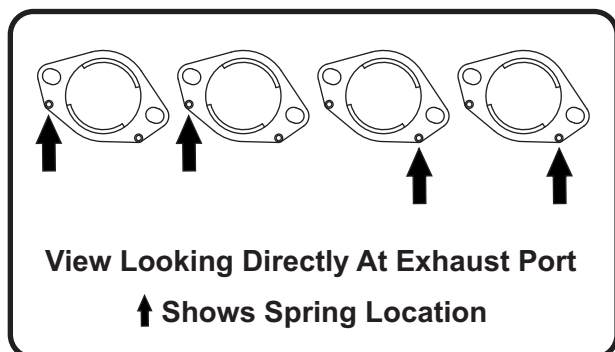
Note¹: The stock exhaust port gaskets will not be re-used with the Yoshimura full-system.

Note²: Remove O2 sensor from stock header on 2016 model.

Installation

1. Install (No. 2,3) *R795SDM*, *CB916SDR-01*, Yoshimura manifolds and flanges into the exhaust ports using the stock header nuts. See below for proper flange orientation. Torque the stock header nuts to factory specifications.

Note: Hook (No. 6) *RACE-SPS-1*, medium exhaust springs onto (No. 2) *CB916-SDR-01*, flange as shown to ease installation.



2. Install (No. 1) *1426-404-1*, Yoshimura header onto (No. 3) *R795SDM*, manifolds one leg at a time.
3. Check to make sure header is fully seated and secure header to flange by hooking (No. 6) *RACE-SPS-1*, medium spring to header.

4. Install (No. 4) *14140-419-1*, tailpipe inlet onto (No. 1) *1426-404-1*, header outlet. Align tailpipe chassis mount bracket to the backside of the chassis mount and secure using the stock chassis mount bolt, washer, and nut. See assembly diagram for proper orientation and order of hardware.
5. Install (No. 5) *1414008551-RMA*, muffler onto (No. 4) *14140-419-1*, tailpipe outlet. Align muffler to the backside of the muffler mount and secure using the stock bolt, washer, and nut.
6. Install (No. 6) *RACE-SPS-1*, medium exhaust spring between muffler and tailpipe.
7. Install (No. 6) *RACE-SPS-1*, medium exhaust springs between tailpipe and header.
8. Torque muffler mount bolt and tailpipe mount bolt to factory specifications.
9. Re-install the radiator bracket.
10. Install supplied O2 sensor plug for 2012-2015 models. For 2016 model, install stock O2 sensor into Yoshimura header.
11. Re-install left and right side fairings.
12. Re-install the rear lower cowl.
13. Before starting vehicle, check for proper clearance between new exhaust system and rear suspension (i.e. tire, swingarm, brakes, rear shock, and etc.) If any problem is found, please carefully follow through the installation steps again. If problem still persists, please call Yoshimura Tech Department at (800) 634-9166 / in CA (909) 628-4722.
14. It is recommended that the muffler and tailpipe be wiped down with rubbing alcohol to remove oil and fingerprints. This will help prevent tarnishing of the finish after the exhaust is heated up.

Note: After starting vehicle, it is normal for new exhaust system and muffler to emit smoke until oil residue burns off.