

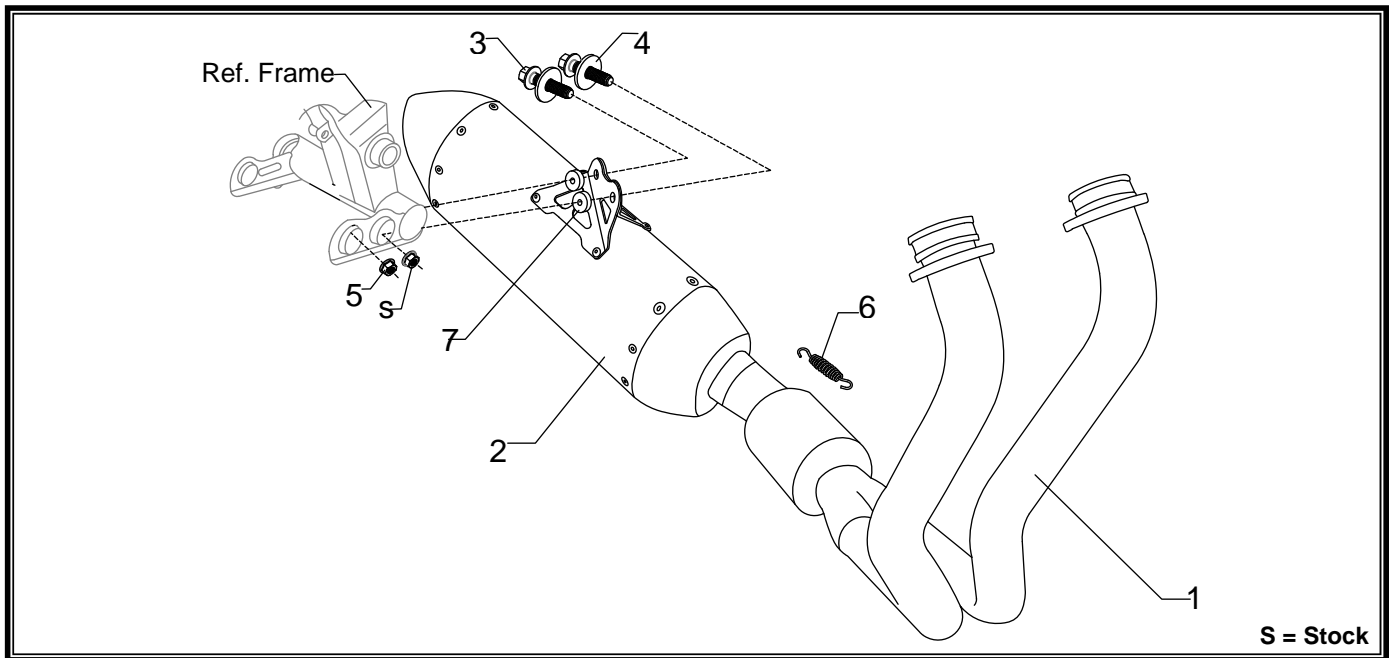


PERFORMANCE EXHAUST SYSTEM

APPLICATION

| | |
|----------------|--|
| YEAR | MODEL |
| 2012-2013 | Kawasaki Ninja 650 |
| PRODUCT | |
| 146500D520 | RS4S SS Full-System Exhaust with Stainless Steel Sleeve, Carbon Fiber Endcap |

| | |
|--|---|
| | <i>This product is designed for use in closed course racing and is not intended for highway use. In the state of California, it is illegal to modify the emission control system, which includes the fuel injection of any vehicle.</i> |
| | <i>You must know how to remove and replace your stock exhaust in order to install this product otherwise have it installed by a professional mechanic. Keep all stock parts from your existing system as some components may be necessary to install your new Yoshimura exhaust depending on the application.</i> |
| | <i>Read through all instructions before beginning installation. Exhaust system can be extremely hot. Let motorcycle cool down before beginning installation. Always wear hand and eye protection and take precautionary measures to avoid injury.</i> |



| No. | Part # | Description | Qty |
|-----|------------|----------------------------------|-----|
| 1 | 14650-401 | Yoshimura Header | 1 |
| 2 | 14650-419 | Yoshimura Tailpipe | 1 |
| 3 | M8X45H | 8mm x 45mm Flanged Hex Head Bolt | 2 |
| 4 | 8MMWASHERL | 8mm Lg. Washer | 2 |
| 5 | 8MMNUT | 8mm Flange Nut | 1 |
| 6 | RACE-SPX-1 | Short Spring | 1 |
| 7 | 8X10SPC | Aluminum Spacer | 2 |
| ** | ST-200 | Spring Puller Tool | 1 |
| ** | 17029 | Yoshimura Sticker Sheet | 1 |

*Metric Socket Set
Combination Wrench Set
Torque Wrench
Metric Allen Wrench Set*

-REMOVAL-

- 1. Remove the header nuts.**
- 2. While securely supporting the stock muffler assembly, remove the (2) chassis mount bolts.
Note: The stock chassis mount rubber grommets and spacers will be re-used with the Yoshimura Exhaust System.**
- 3. Use caution when remove the stock muffler assembly making sure not to damage the stock exhaust port gaskets as they will be re-used with the Yoshimura Exhaust System. Inspect gasket and replace if necessary.**

-INSTALLATION-

- 1. Install Yoshimura header along with the stock exhaust port gaskets using the stock header nuts.
Note: Do not tighten header nuts at this time.**
- 2. Slip Yoshimura muffler-tailpipe assembly onto Yoshimura header.**
- 3. Install muffler to chassis mount using the provided bolts, washers, and nut. See diagram for proper orientation.**

Note: If necessary, install provided aluminum spacers (#7) as shown in the parts diagram to allow for more clearance between the tire and the Yoshimura muffler.

- 4. Install provided exhaust spring on tailpipe to header connection.**
- 5. Torque muffler chassis mount bolts to factory specification.**
- 6. Torque header nuts to factory specification.**
- 7. Fitment check and Notes.**
- 8. Before starting motorcycle, check for proper clearance between new exhaust system and rear suspension (i.e. tire, swing-arm, brake, rear shock, engine, and etc.) If any problem is found, please carefully follow through the installation steps again. If problem still persists, please call Yoshimura Tech Department at (800) 634-9166 / in CA (909) 628-4722.**
- 9. It is recommended that the muffler and tailpipe be wiped down with rubbing alcohol to remove oil and fingerprints. This will help prevent tarnishing of the finish after the exhaust is heated up.**
- 10. NOTE: After starting motorcycle, it is normal for new exhaust system and muffler to emit smoke until oil residue burns off.**