

Thank you for purchasing a ZTechnik product. Read these instructions carefully and thoroughly before beginning work. Dealers, if installing this windshield for a customer, please give them this manual upon completion. It contains information needed to properly maintain and use this product.

Description:	VStream® Replacement Windscreen	Model:	2006-Current R1200/1250GS/GSA
Part Number:	Z2485/Z2486/Z2487/Z2488	Installation Time:	20 min. Difficulty Level: Easy

CONTENTS OF KIT

ITEM	DESCRIPTION	QTY.
BAG#1240	VStream Windscreen	1
44-447300-000	Rubber Grommets	4

TOOLS REQUIRED

T-25 Torx Wrench



**ALL OEM FASTENERS
WILL BE REUSED.**



ATTENTION: Special notes and cautionary measures which can prevent damage to the accessory or vehicle.

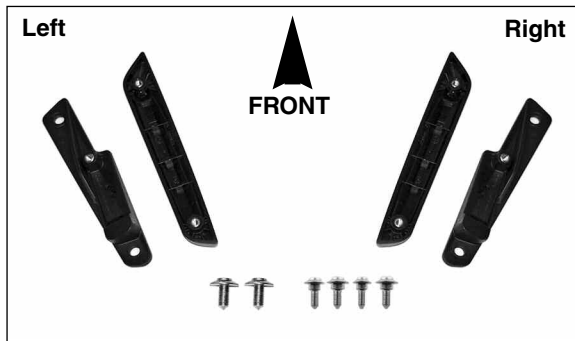


NOTE: Tips for facilitation of operation, control and adjustment, as well as maintenance work.



There are variations in the stock R1200GS windscreen hardware from early production to later production. When installing the VStream windscreen, use **all the hardware** that came with your stock windscreen.

STOCK HARDWARE, EARLY PRODUCTION



STOCK HARDWARE, LATE PRODUCTION

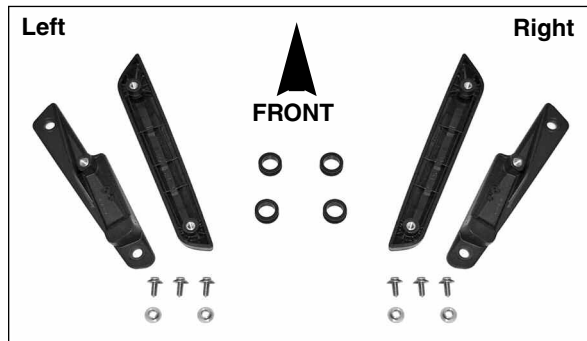




Figure 1



Figure 2

PREPARATION

Place motorcycle securely on its centerstand.

Figure 1

With a T-25 Torx Wrench, remove the stock windscreen. Stock hardware will be reused.

Figure 2

With a T-25 Torx Wrench, remove brackets from stock windscreen.

Figure 3

Remove grommets from stock windscreen.

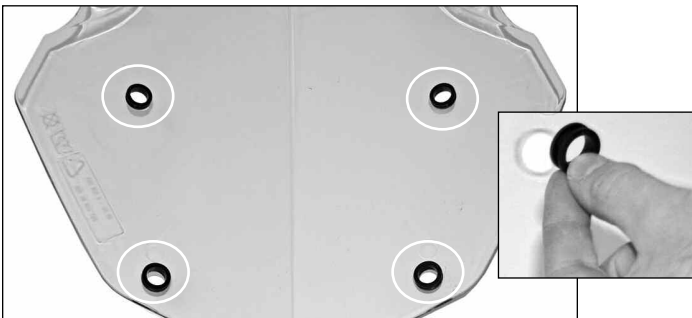


Figure 3



Figure 4



Figure 5

INSTALLATION

Figure 4

(Late production only) Install Rubber Grommets from BAG#1240 into each hole of the VStream Windscreen.

(Early production only) Install the four OEM grommets from the OEM screen into each hole of the VStream Windscreen.

Figure 5

Place outside trim onto the front side of the VStream Windscreen.

(Late production only) Place one stock compression washer into each hole as shown in Figure 5 inset.

INSTALLATION; CONT'D

Figure 6

Using a T-25 Torx Wrench, install the inside brackets to the VStream Windscreen with the stock screws. Tighten firmly.

Figure 7

Install VStream Windscreen to motorcycle.

Figure 8

Using a T-25 Torx Wrench, secure windscreen with stock screws. Tighten firmly.

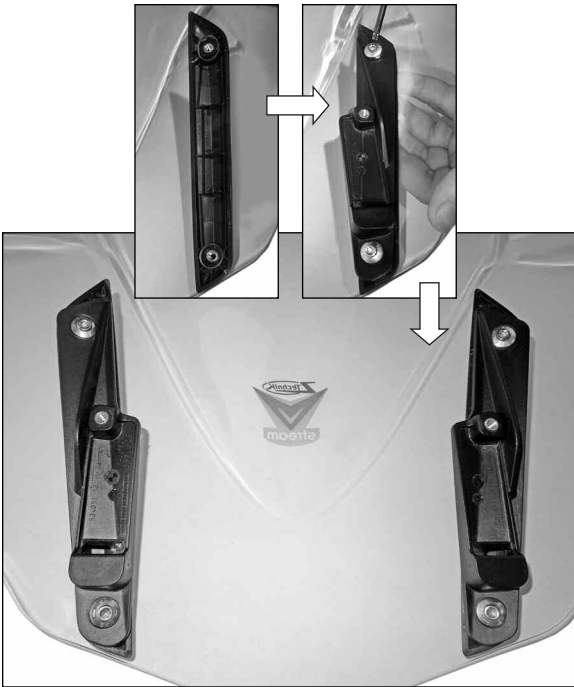


Figure 6



Figure 7



Figure 8



ZTechnik's **Z5220 Windscreen Stabilizer Kit** adds support and strength to the OEM windshield mount arms on 2013 and later BMW® R1200/1250 GS/GSA motorcycles.

The Stabilizer Kit securely supports even the tallest ZTechnik Touring Size Windscreen (Z2388). The Z5220 Kit also works with all OEM and aftermarket windscreens currently available.

The Stabilizer bracket installs easily and is fully compatible with the OEM windscreen height adjust hardware. Simply loosen the two Stabilizer knobs, adjust the windscreen like you normally do, re-tighten the two knobs, and off you go.



CLEANING AND MAINTENANCE

To clean the screen, wash with a clean soft cloth and plenty of warm water and, if necessary, a non-abrasive soap such as dishwashing liquid. Flannel or soft chamois make good cleaning cloths. Paint, glue residue or grease removal: Moisten cotton wad with naphtha or turpentine followed by a wash as above.

National Cycle **Shield Wash™** (N1401-01) makes a good daily cleaner and comes with a handy travel-size bottle. Shield Wash is safe for all windshields and helmet visors

Do not clean polycarbonate in hot sun or high temperatures. Do not clean the screen with household glass cleaners. Do not allow brake fluid, alcohol, or strong solvents to contact the screen.

RAIN REPELLENT

Do not use rain protective products made for glass. We recommend National Cycle's **RainZip®** (N1410-01) to keep your windscreen clear in rainy weather.



Register Your Windshield Online at www.nationalcycle.com

ZTechnik by National Cycle 3-Year Limited Warranty

National Cycle hereby warrants to the original registered owner of a National Cycle polycarbonate windshield for a period of three years from the date of purchase against breakage. This limited warranty is expressly limited to the replacement of the polycarbonate windscreen. This limited warranty does not include scratches, coating failure, cosmetic wear and tear, replacement of hardware, or any consequential damages or expenses including labor cost of installation, removal and/or replacement, inconvenience, inbound freight expenses or damage to any other component of the motorcycle or any other accessories. Certain chemicals, generally known as acidic hydrocarbons, are known to cause polycarbonate damage and will not be covered under this limited warranty. Please refer to the cleaning instructions supplied with all National Cycle windshields.

Visit www.nationalcycle.com for further details, or call or e-mail National Cycle.

! WARNING

Never ride your motorcycle with loose accessory mounting hardware. Check the hardware for tightness regularly.

Today's motorcycles are built to withstand the moderate loads imposed on them by the foreseeable addition of an accessory(ies). If an accessory(ies) adversely affects your motorcycle's stability, immediately remove the accessory(ies). Do not ride a motorcycle that exhibits unsafe handling traits.

Have experienced service personnel correct any problem before riding with the accessory(ies) installed. For further questions concerning handling problems associated with an accessory(ies), contact your dealer, motorcycle manufacturer, or accessory manufacturer.

Sunlight reflected off the inside curvature of the windscreen can, at certain times of day, cause extreme heat buildup on the motorcycles instruments and possibly even melt them. Exercise care in parking to avoid this. Park your motorcycle facing the sun or place an opaque object over this area.